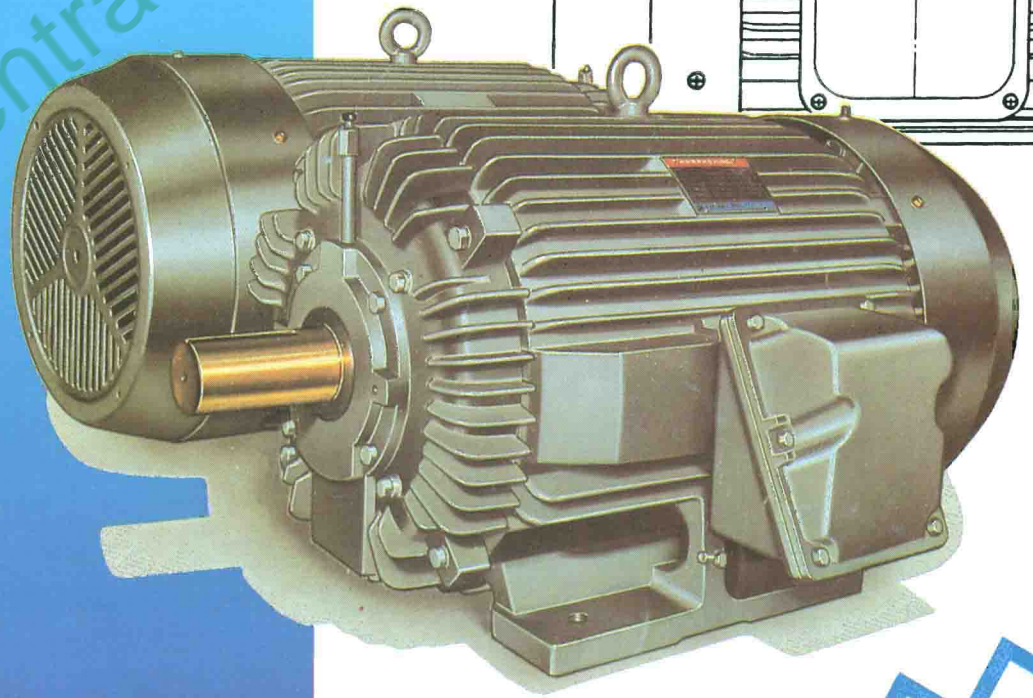
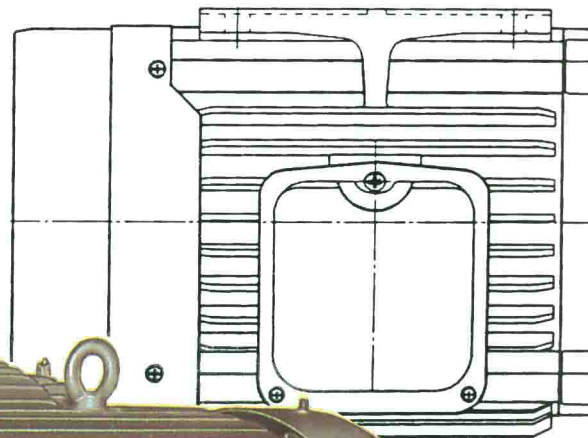




Frames D63 - D280M
Horizontal, Vertical
Totally-Enclosed Fan - Cooled
Squirrel Cage
3-Phase Continuous Rating
F Insulation
IP 55



METRIC SERIES

BS STANDARD

www.centrateknindo.com

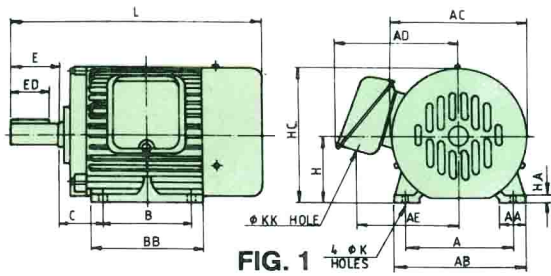


FIG. 1

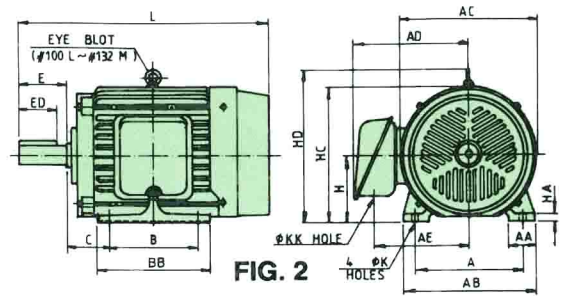


FIG. 2

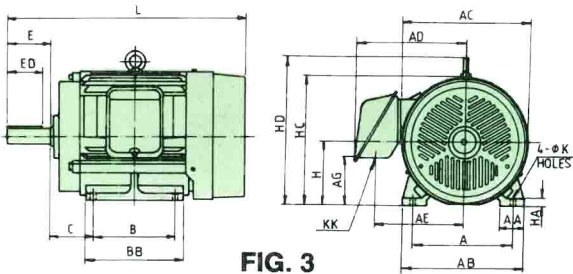


FIG. 3

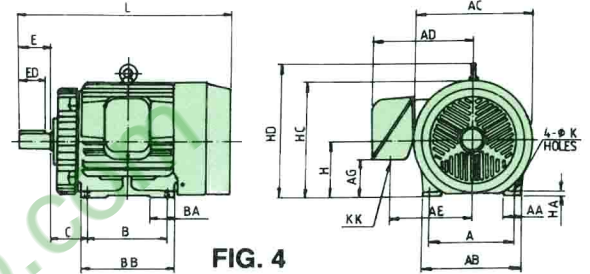
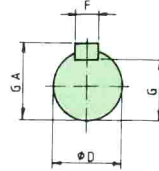


FIG. 4

Frame No.	Output (kW)				Fig. No.	Fixing Dimensions												
	2 pole	4 pole	6 pole	8 pole		A	B	C	K	AA	AB	AC	BB	BA	H	HA	HC	HD
D63M	0.18	0.18	-	-	1	100	80	40	7	28	120	130	100	-	63	8	128	-
D71M	0.37 0.55	0.37	0.18	-		112	90	45	7	35	140	162	114	-	71	8	152	-
D80M	0.75 1.1	0.55 0.75	0.37 0.55	0.18	2	125	100	50	10	35	155	180	130	-	80	8	168	-
D90S	1.5	1.1	0.75	0.37		140	100	56	10	35	170	200	130	-	90	10	190	-
D90L	2.2	1.5	1.1	0.55	3	140	125	56	10	35	170	200	155	-	90	10	190	-
D100L	3	2.2 3	1.5	0.75 1.1		160	140	63	12	45	196	225	176	-	100	12	213	247
D112M	4	4	2.2	1.5	4	190	140	70	12	45	226	230	176	-	112	15	225	267
D132S	5.5 7.5	5.5	3	2.2		216	140	89	12	50	260	285	175	-	132	15	274	316
D132M	-	7.5	4 5.5	3	5	216	178	89	12	50	260	285	213	-	132	15	274	316
D160M	11 15	11	7.5	4 5.5		254	210	108	14.5	60	308	324	250	-	160	18	322	373
D160L	18.5	15	11	7.5	6	254	254	108	14.5	60	308	324	294	-	160	18	322	373
D180M	22	18.5	-	-		279	241	121	14.5	60	324	398	286	82.5	180	20	380	440
D180L	-	22	15	11	7	279	279	121	14.5	60	324	398	324	82.5	180	20	380	440
D200L	30 37	-	-	-		318	305	133	18.5	80	378	442	360	80	200	20	426	486
D200L	-	30	18.5 22	15	8	318	305	133	18.5	80	378	442	360	80	200	20	426	486
D225S	-	37	-	18.5		356	286	149	18.5	80	416	490	366	120	225	22	467	538
D225M	45	-	-	-	9	356	311	149	18.5	80	416	490	391	120	225	22	467	538
D225M	-	45	30	22		356	311	149	18.5	80	416	490	391	120	225	22	467	538
D250S	55	-	-	-	10	406	311	168	24	100	486	600	415	150	250	30	530	618
D250S	-	55	37	30		406	311	168	24	100	486	600	415	150	250	30	530	618
D250M	75	-	-	-	11	406	349	168	24	100	486	600	449	150	250	30	530	618
D250M	-	75	45	37		406	349	168	24	100	486	600	449	150	250	30	530	618
D280S	90	-	-	-	12	457	368	190	24	110	560	650	440	120	280	30	585	655
D280S	-	90	55	45		457	368	190	24	110	560	650	440	120	280	30	585	655
D280M	110	-	-	-	13	457	419	190	24	110	560	650	490	120	280	30	585	655
D280M	-	110	75	55		457	419	190	24	110	560	650	490	120	280	30	585	655

Note : (1) All dimensions in millimeters.

(2) Tolerance on dimensions.

* Shaft center height H : $\begin{matrix} 0 \\ -0.5 \end{matrix}$ for frames 71 to 250.

* Keyway G : $\begin{matrix} 0 \\ -0.2 \end{matrix}$

* Key width : Tolerance class h9.

ALL DATA SUBJECT TO CHANGE WITHOUT NOTICE.
DIMENSIONS FOR ESTIMATING PURPOSE ONLY.

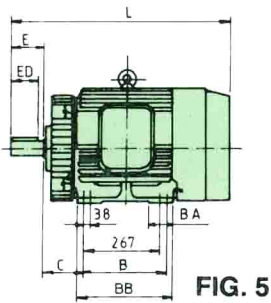


FIG. 5

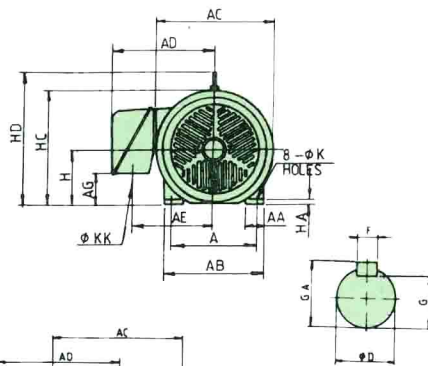


FIG. 6

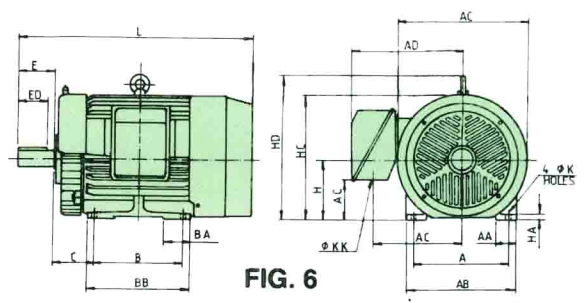


FIG. 7

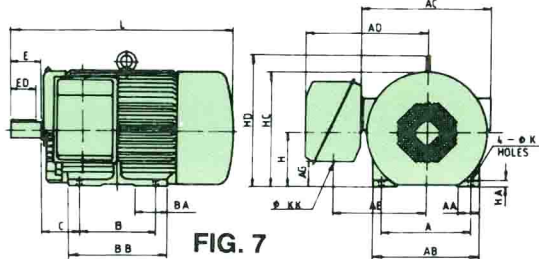
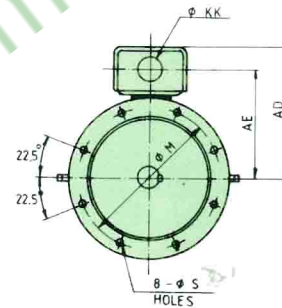
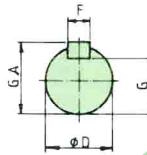
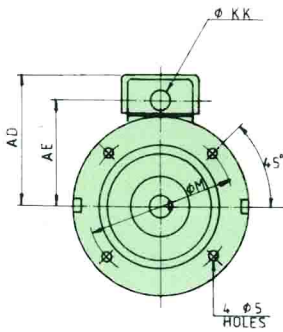
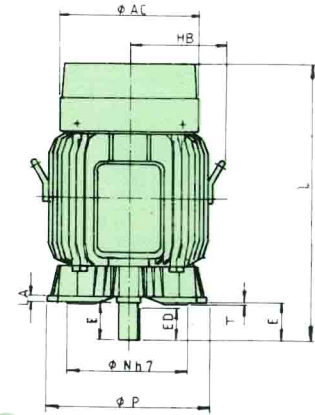
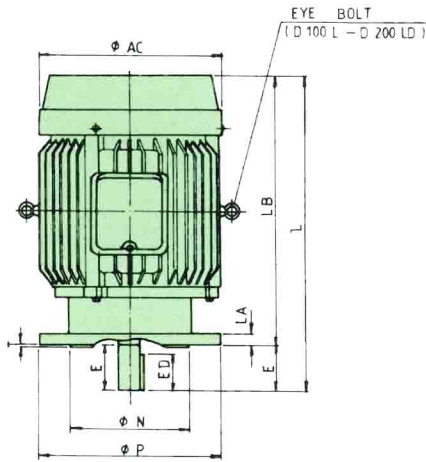


FIG. 8

L	Terminal Box				Shaft Extension			Key and Keyway			Bearings		Approx. Weight (kg)	Frame No.
	AD	AE	AG	KK	D	E	ED	F	GA	G	L.S.	Opp. L.S.		
211	113	79	47	22	11	23	18	4	12.5	8.5	6201ZZ	6201ZZ	8	D63M
244	130	99	55	22	14	30	22	5	16.0	11.0	6203ZZ	6203ZZ	12	D71M
270	146	118	35	22	19	40	30	6	21.5	15.5	6204ZZ	6204ZZ	16	D80M
291	155	127	45	22	24	50	40	8	27.0	20.0	6205ZZ	6205ZZ	22	D90S
316	155	127	45	22	24	50	40	8	27.0	20.0	6205ZZ	6205ZZ	25	D90L
366	168	145	43	28	28	60	50	8	31.0	24.0	6206ZZ	6206ZZ	32	D100L
385	173	145	55	28	28	60	50	8	31.0	24.0	6306ZZ	6206ZZ	43	D112M
450	213	183	57	35	38	80	65	10	41.0	33.0	6308ZZ	6208ZZ	62	D132S
488	213	183	57	35	38	80	65	10	41.0	33.0	6308ZZ	6208ZZ	74	D132M
603	283	231	120	52	42	110	90	12	45.0	37.0	6310ZZ	6208ZZ	113	D160M
647	283	231	120	52	42	110	90	12	45.0	37.0	6310ZZ	6208ZZ	141	D160L
676.5	340	275	105	60	48	110	90	14	51.5	42.5	6310ZZ	6210ZZ	180	D180M
714.5	340	275	105	60	48	110	90	14	51.5	42.5	6310ZZ	6210ZZ	230	D180L
772.5	355	305	135	78	55	110	90	16	59.0	49.0	6312C3	6212C3	350	D200L
772.5	355	305	135	78	55	110	90	16	59.0	49.0	6312	6212	350	D200L
820	440	350	145	91	60	140	110	18	64.0	53.0	NU215	6312	440	D225S
815	440	350	145	91	55	110	90	16	59.0	49.0	6312C3	6312C3	490	D225M
845	440	350	145	91	60	140	110	18	64.0	53.0	NU215	6312	490	D225M
965	530	420	115	118	60	140	110	18	64.0	53.0	6313C3	6313C3	540	D250S
965	530	420	115	118	70	140	110	20	74.5	62.5	NU218	6313	540	D250S
1003	530	420	115	118	60	140	110	18	64.0	53.0	6313C3	6313C3	620	D250M
1003	530	420	115	118	70	140	110	20	74.5	62.5	NU218	6313	620	D250M
1118.5	565	440	160	118	65	140	110	18	69.0	58.0	6314C3	6313C3	830	D280S
1123.5	565	440	160	118	80	170	140	22	85.0	71.0	NU220	6315	830	D280M
1169.5	565	440	160	118	65	140	110	18	69.0	58.0	6314C3	6313C3	910	D280M
1174.5	565	440	160	118	80	170	140	22	85.0	71.0	NU220	6315	910	D280M

- (3) Terminal box can be rotated to four positions.
- (4) Terminal box can be mounted on opposite side by reversing the stator on frames up to D225. On frames 250 and 280 the standard terminal position is as shown in Fig. 7 & 8. For terminal box mounted in other positions contact TATUNG office.
- (5) 2 pole motors should be used for direct coupled drives only. 4, 6 and 8 pole motors can be used for either direct coupled or belt. However it is recommended to use a flexible coupling for motors using roller bearings (NU type) in case of direct coupled. If you are not sure, please contact TATUNG OFFICE before installation.
- (6) Normal direction is C.W. looking at shaft end.



D63D ~ D200LD

D225SD ~ D280MD

* Dimensions in millimeters.

Frame No.	Output (kW)				L	M	N	P	øS	T	AC	AE	AD	HB	øKK	LA	Shaft End					
	2P	4P	6P	8P													øD	E	ED	F	G	GA
D63D	0.18	0.18	-	-	244	130	110	160	10	3.5	130	82	113	-	22	10	11	23	18	4	8.5	12.5
D71D	0.37 0.55	0.37	0.18	-	273	130	110	160	10	3.5	162	102	130	-	22	10	14	30	22	5	11.0	16.0
D80D	0.75 1.1	0.55 0.75	0.37 0.55	0.18	296	165	130	200	12	3.5	180	118	146	-	22	12	19	40	30	6	15.5	21.5
D90SD	1.5	1.1	0.75	0.37	326	165	130	200	12	3.5	200	127	155	-	22	12	24	50	40	8	20.0	27.0
D90LD	2.2	1.5	1.1	0.55	351	165	130	200	12	3.5	200	127	155	-	22	12	24	50	40	8	20.0	27.0
D100LD	3.0	2.2 3.0	1.5	0.75 1.1	391	215	180	250	14.5	4.0	223	145	168	147	28	15	28	60	50	8	24.0	31.0
D112MD	4.0	4.0	2.2	1.5	415	215	180	250	14.5	4.0	227	145	173	155	28	15	28	60	50	8	24.0	31.0
D132SD	5.5 7.5	5.5	3.0	2.2	450	265	230	300	14.5	4.0	286	183	213	184	35	20	38	80	65	10	33.0	41.0
D132MD	-	7.5	4.0 5.5	3.0	488	265	230	300	14.5	4.0	286	183	213	184	35	20	38	80	65	10	33.0	41.0
D160MD	11 15	11	7.5	4.0 5.5	603	300	250	350	18.5	5.0	324	231	283	213	52	14	42	110	90	12	37.0	45.0
D160LD	18.5	15	11	7.5	647	300	250	350	18.5	5.0	324	231	283	213	52	14	42	110	90	12	37.0	45.0
D180MD	22	18.5	-	-	676.5	300	250	350	18.5	5.0	398	275	340	260	60	15	48	110	90	14	42.5	51.5
D180LD	-	22	15	11	714.5	300	250	350	18.5	5.0	398	275	340	260	60	15	48	110	90	14	42.5	51.5
D200LD	30 37	-	-	-	772.5	350	300	400	18.5	5.0	442	301	365	288	78	19	55	110	90	16	49.0	59.0
D200LD	-	30	18.5 22.0	15	772.5	350	300	400	18.5	5.0	442	301	365	288	78	19	55	110	90	16	49.0	59.0
D255SD	-	37	-	18.5	817	400	350	450	18.5	5.0	485	350	440	324	91	22	60	140	110	18	53.0	64.0
D225MD	45	-	-	-	812	400	350	450	18.5	5.0	485	350	440	324	91	22	55	110	90	16	49.0	59.0
D225MD	-	45	30	22	842	400	350	450	18.5	5.0	485	350	440	324	91	22	60	140	110	18	53.0	64.0
D250MD	55 75	-	-	-	1009.5	500	450	550	18.5	5.0	560	410	530	350	118	22	60	140	110	18	53.0	64.0
D250MD	-	55 75	37 45	30 37	1003.5	500	450	550	18.5	5.0	560	410	530	350	118	22	70	140	110	20	62.5	74.5
D280MD	90 110	-	-	-	1310	500	450	550	18.5	5.0	620	456	580	380	118	22	65	140	110	18	58.0	69.0
D280MD	-	90 110	55 75	45 55	1320	500	450	550	18.5	5.0	620	456	580	380	118	22	80	170	140	22	71.0	85.0

Note : (1) Tolerance of dimensions D : j6 for frame 80 ~ 112M
k6 for frame 132S ~ 180L
m6 for frame 200L ~ 280M

(2) Tolerance of dimension "N" : h7.

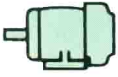
KW	Full Load Rpm	Frame No.	Current		Torque			Efficiency			Power Factor		
			Full Load (A)	Locked Rotor (A)	Full Load (kg-m)	Locked Rotor (%)	Break Down (%)	Full Load (%)	3/4 Load (%)	1/2 Load (%)	Full Load (%)	3/4 Load (%)	1/2 Load (%)
0.18	2820	D63	0.51	3.0	0.062	240	250	64.5	60.5	53.0	77.5	70.5	60.5
	1380	D63	0.61	3.3	0.127	250	275	66.0	63.0	56.0	63.0	53.5	42.5
	925	D71	0.80	3.3	0.190	300	300	61.0	56.0	47.5	52.5	44.5	36.0
0.37	2870	D71	1.00	5.6	0.126	240	335	68.0	66.0	59.0	79.5	70.5	59.5
	1405	D71	1.20	5.3	0.256	370	370	66.0	62.5	56.5	69.0	61.0	49.5
	925	D80	1.36	5.5	0.390	250	260	69.0	66.5	60.0	56.0	46.5	36.0
0.55	2805	D71	1.30	6.6	0.191	260	310	70.0	70.0	66.0	86.5	81.5	72.5
	1405	D80	1.34	7.7	0.381	305	300	74.0	73.5	70.0	80.0	71.5	58.5
	925	D80	1.72	8.5	0.579	200	220	73.0	70.0	66.0	62.0	53.0	40.0
0.75	2780	D80	1.75	9.5	0.263	245	290	71.0	70.5	67.0	87.5	82.5	73.5
	1400	D80	1.75	10.5	0.522	285	300	72.0	72.0	69.0	80.0	71.0	58.0
	925	D90S	2.10	9.8	0.790	315	305	74.0	73.5	70.0	70.0	60.5	48.0
1.1	2810	D80	2.30	12.5	0.381	295	290	78.5	79.0	77.0	88.0	82.5	73.5
	1420	D90S	2.60	15.0	0.755	320	320	79.5	80.5	78.0	77.0	70.5	55.0
	925	D90L	3.00	13.7	1.158	265	245	75.0	75.5	73.0	70.0	61.0	48.0
1.5	2805	D90S	3.00	19.0	0.521	330	305	79.5	80.0	77.5	90.5	87.0	80.0
	1395	D90L	3.20	19.2	1.047	295	265	79.0	80.0	78.5	83.5	77.5	65.0
	940	D100L	3.60	20.3	1.554	265	270	81.0	81.5	79.0	74.0	66.0	53.0
2.2	2795	D90L	4.50	34.0	0.767	390	350	81.5	81.5	79.5	86.0	80.5	69.0
	1405	D100L	4.50	28.0	1.525	280	285	82.5	83.5	82.5	83.5	77.0	65.5
	940	D112M	5.20	30.5	2.280	305	250	81.0	81.5	79.0	74.5	67.0	54.0
3	2885	D100L	5.80	40.0	1.013	205	280	84.0	84.5	83.0	91.5	89.5	84.5
	1420	D100L	6.00	45.0	2.058	335	320	83.5	83.5	81.5	84.0	78.5	69.5
	960	D132S	6.90	36.0	3.043	230	280	82.5	82.0	79.5	75.5	67.0	53.5
4	2890	D112M	7.60	54.0	1.348	205	280	84.5	85.0	83.5	91.0	88.0	80.5
	1420	D112M	7.80	55.0	2.744	335	300	84.5	85.5	84.5	84.5	78.5	68.5
	960	D132M	8.80	49.0	4.058	245	295	84.0	84.0	81.5	77.0	68.5	56.0
5.5	2865	D132S	10.70	60.5	1.870	210	250	84.5	84.5	81.5	86.5	82.5	73.0
	1435	D132S	10.70	60.0	3.733	245	275	86.0	87.0	85.5	85.5	79.5	68.5
	955	D132M	11.20	59.5	5.609	220	235	86.0	86.5	85.5	81.5	75.0	63.0
7.5	2875	D132S	14.20	93.5	2.541	240	265	86.5	86.5	84.5	86.5	84.5	75.0
	1440	D132M	14.40	90.0	5.073	285	305	87.5	88.0	87.0	85.5	81.5	70.5
	960	D160M	15.80	94.0	7.609	260	305	87.5	88.0	87.0	77.0	70.5	58.5
11	2915	D160M	20.40	138.0	3.675	275	320	88.5	88.5	86.0	87.0	83.5	75.5
	1455	D160M	20.40	154.0	7.364	280	315	89.5	89.5	89.0	86.5	82.5	73.0
	955	D160L	22.30	140.0	11.220	270	275	88.5	89.0	89.0	79.5	73.5	62.5
15	2920	D160M	26.90	194.0	5.003	290	315	90.0	90.0	88.5	88.5	85.5	78.5
	1455	D160L	27.20	210.0	10.040	265	325	90.5	90.5	90.0	87.5	84.0	75.5
	975	D180L	29.50	180.0	14.990	220	230	90.0	90.5	90.5	80.5	76.0	66.0
18.5	2920	D160L	32.20	248.0	6.171	325	330	91.0	91.5	90.5	90.0	88.0	82.0
	1460	D180M	34.00	230.0	12.340	255	285	90.5	91.0	90.0	85.5	82.0	73.5
	975	D200L	37.50	247.0	18.480	230	310	90.5	90.5	90.0	78.0	71.5	60.0
22	2925	D180M	39.20	266.0	7.326	260	250	90.0	89.5	87.5	89.0	87.0	82.0
	1460	D180L	41.50	252.0	14.680	275	250	90.0	90.5	90.0	84.0	80.5	71.5
	970	D200L	42.00	244.0	22.090	180	240	90.5	91.0	91.0	84.5	81.5	74.0
30	2940	D200L	52.00	360.0	9.939	220	290	91.5	91.5	90.0	89.5	88.5	85.5
	1460	D200L	51.50	357.0	20.010	235	255	91.5	92.5	92.0	88.5	85.5	80.0
	975	D225M	56.00	320.0	29.970	235	270	90.5	91.0	91.0	84.5	80.5	72.0
37	2940	D200L	62.40	446.0	12.260	220	290	92.0	92.0	90.5	89.5	88.5	85.5
	1470	D225S	65.00	428.0	24.520	245	315	92.0	92.5	91.5	86.0	83.5	78.0
	980	D250S	66.00	385.0	36.770	235	250	91.5	92.5	92.0	87.0	84.5	77.0
45	2940	D225M	76.00	498.0	14.910	220	235	92.5	92.5	91.0	91.5	91.0	88.0
	1460	D225M	80.50	521.0	30.020	240	295	92.0	92.0	91.5	87.0	84.5	78.5
	980	D250M	78.50	515.0	44.720	270	295	92.0	92.5	92.5	86.5	83.5	75.0
55	2930	D250S	94.00	544.0	18.280	165	270	92.0	92.0	91.0	91.0	91.0	88.0
	1475	D250S	94.00	672.0	36.320	230	305	93.0	93.0	92.5	88.5	86.5	80.0
	980	D280S	99.00	639.0	54.660	250	265	92.5	93.0	92.0	86.0	83.0	75.0
75	2930	D250M	124.00	830.0	24.920	205	330	92.5	93.0	92.0	91.5	90.0	86.5
	1475	D250M	134.00	955.0	49.530	280	290	93.5	94.0	93.5	94.0	80.0	71.0
	985	D280M	132.00	833.0	74.160	260	290	93.0	93.5	92.5	85.0	80.5	71.0
90	2950	D280S	155.00	884.0	29.270	165	285	93.5	93.5	93.0	88.0	87.0	82.0
	1465	D280S	150.00	1008.0	59.840	265	260	93.0	93.0	92.0	90.0	88.5	83.0
110	2965	D280M	185.00	1350.0	36.130	190	395	93.5	93.5	93.0	90.0	88.5	84.0
	1465	D280M	181.00	1097.0	73.130	220	265	93.0	93.0	92.0	90.5	88.5	82.5

Note : (1) All data above are typical values based on test.
(2) For current of other voltages

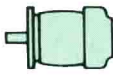
(3) Tolerance : according to BS 4999 part 101, IEC 34-1.
(4) All data subject to change without notice.

MOUNTING ARRANGEMENTS

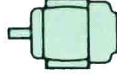
Horizontal Shaft



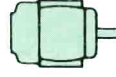
B3 IM 1001
Foot mounted.



B5 IM 3001
'D' type flange at D.E. No feet.



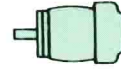
B6 IM 1051
Foot wall mounted with feet on left-hand side when viewed from D.E.



B7 IM 1061
Foot wall mounted with feet on right-hand side when viewed from D.E.



B8 IM 1071
Ceiling mounted with feet above motor.



B14 IM 3601
'C' type flange at D.E. No feet.



B17 IM 2302
or IM 2202
2 'C' or 'D' type flanges. Foot mounted.

Vertical Shaft



V1 IM 3011
'D' type flange at D.E. Shaft down, no feet.



V3 IM 3031
'D' type flange at D.E. Shaft up, no feet.



V5 IM 1011
Vertical foot. Wall mounted. Shaft down.



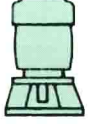
V6 IM 1031
Vertical foot. Wall mounted. Shaft up.



V18 IM 3611
'C' type flange at D.E. Shaft down, no feet.



V19 IM 3631
'C' type flange at D.E. Shaft up, no feet.



V22 IM 3811
Skirt mounting. Shaft down, no feet.



TATUNG

DEALER

