

EUROFLOTM
where innovation flows



Vertical Multistage
Centrifugal Pumps

EMV/S/Kseries



www.euroflopumps.com

Coding System

e.g. **EMV 3 - 100 F A2 022 T**

XXXX XX-XXX X XX XXX X

Series _____

- EMV - Cast iron pump head
- EMVS - Fully SS304
- EMVK - Fully SS316

Nominal flow (m³/hr) _____

Number of impellers _____

(09/2) = impeller, including 2 reduced ones

Connection type _____

- F = In-line round flanges in cast iron (Standard slip on type)
- V = Victaulic couplings, in-line ports (only for Fully SS pumps)
- C = Clamp couplings, in-line ports (only for Fully SS pumps)

Motor Frequency/Speed _____

- A2 = 50Hz / 2 pole
- B2 = 60Hz / 2 pole
- *C2 = Dual 50Hz~60Hz / 2 pole.

Motor Rating(kW/10) _____

- e.g.
- 003 = 0.37kW
 - 450 = 45kW

Electrical arrangement _____

- T = Three-phase
- M = Single-phase
- X = Ex-proof motor
- Z = Special motor/voltage
- V = Variable speed drive (Integrates with motor)
- B = Bare pump

Note:

*Pump rated for 50Hz performance Curve

Introduction



EMV/S/K series are vertical multistage, in-line pumps with flange designed according to DIN standard or Victaulic coupling. Standard pumps are fitted with motor according to IEC, with motor efficiency Class EF1; EF2 or NEMA Frame upon request.

All pumps are fitted with Cartridge type mechanical seal for easy change out without removing motor and adapter or the pipes (EMV32 and above).

Flange : DIN/ANSI/JIS (slip-on type starts from EMV32 and above)

Materials : Stainless Steel 304 or 316 with
Cast iron or Stainless steel base

Mounting : Vertical

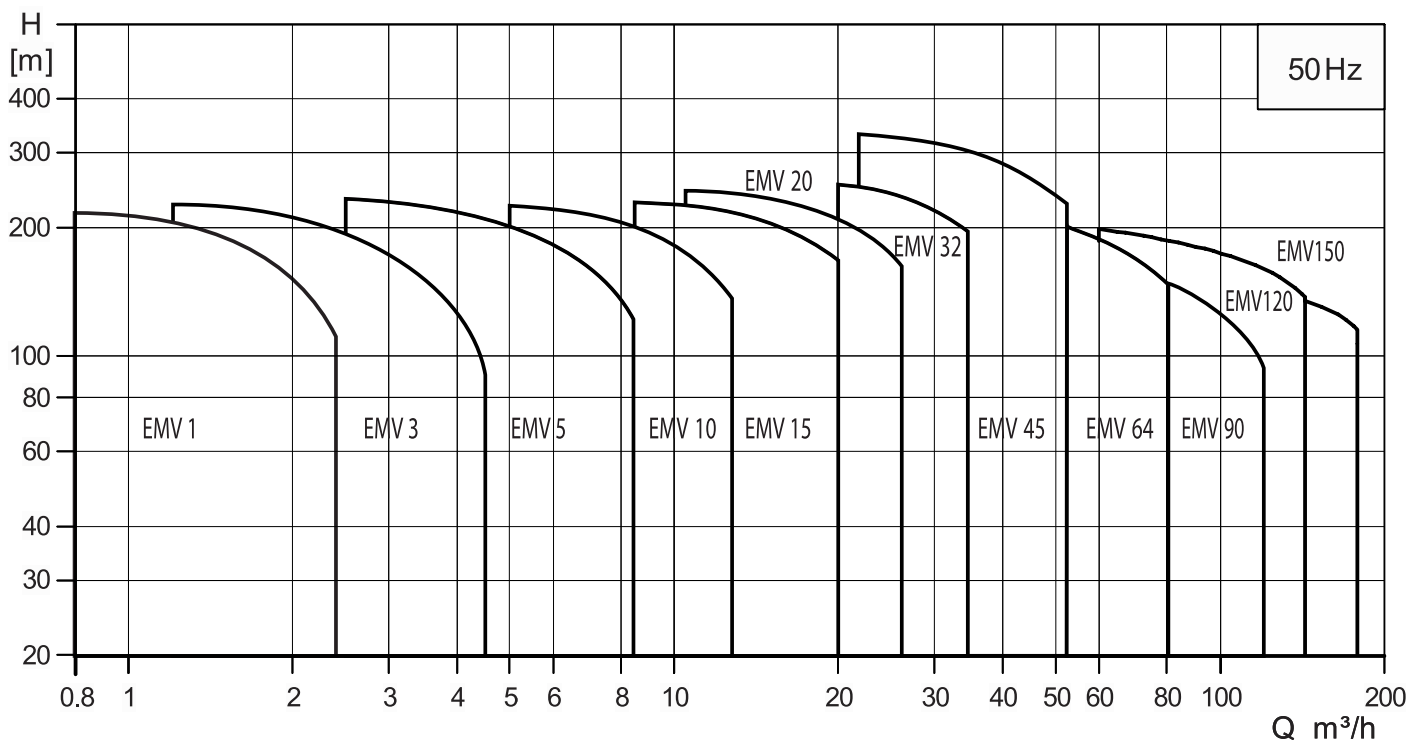
DN 25 - 100
Q 0.2 to 120 m³/hr
O.P. up to 24bar
H up to 330m
Ns up to 3,600rpm
t -20°C to 120°C



Application:

- Water supply and pressure boosting for buildings, water stations, water supply network
- Irrigation and agriculture
- Washing and cleaning systems
- Fire fighting systems
- Process water systems
- Water treatment systems
- Heating, ventilation and air-conditioning
- RO water and desalination application

Pump Standard according to ISO 9906 Annex A



General Characteristics

Range	1	3	5	10	15	20	32	45	64	90	120	150
50 Hz												
Nominal flow [m ³ /h]	1	3	5	10	15	20	32	45	64	90	120	150
Flow range [m ³ /h]	0.7-2.4	1.2-4.5	2.5-8.5	5-13	8.5-23.5	10.5-29	15-40	22-58	30-85	45-120	60-160	75-180
Max. pressure [bar]	21.5	23	24	21.5	23	24.3	27.5	26	21.8	20	21	19
Fluid temperature [°C]	-30 to +120											
Motor power [kW]	0.37-2.2	0.37-3	0.37-5.5	0.37-7.5	1.1-15	1.1-18.5	1.5-30	3-45	4.0-45	5.5-45	11-75	11-75
Version												
EMV: Cast iron and stainless steel EN												
EMVS: Stainless steel EN 1.4301/AISI 304												
EMVK: Stainless steel EN 1.4401/AISI 316												
Motor												
Mains connection 1~[V/Hz] (Permissible voltage tolerance ± 10%)	220-240 V 50 Hz											
Mains connection 3~[V/Hz] (Permissible voltage tolerance ± 10%)	0.37-2.2 kW 220-240 V Δ / 380-415 V Y From 3 kW 380-415 V Δ											
Insulation class	F											
Enclosure class	IP 55											
Ambient temperature	50°C											
EMV Pipe Connection												
Flange	DN 25/ DN 32	DN 25/ DN 32	DN 25/ DN 32	DN 40	DN 50	DN 50	DN 65	DN80	DN100	DN100	DN125	DN125
EMVS, EMVK Pipe Connection												
Flange	DN 25/ DN 32	DN 25/ DN 32	DN 25/ DN 32	DN 40	DN 50	DN 50	DN 65	DN80	DN100	DN100	DN125	DN125
Victaulic-connections	R 1 ¹ / ₄ DN 32	R 1 ¹ / ₄ DN 32	R 1 ¹ / ₄ DN 32	R 2 DN 50	R 2 DN 50	R 2 DN 50	N/A	N/A	N/A	N/A	N/A	N/A
Mechanical seals												
SiC / SiC	Standard											
Seals												
EPDM	Standard											
Viton												

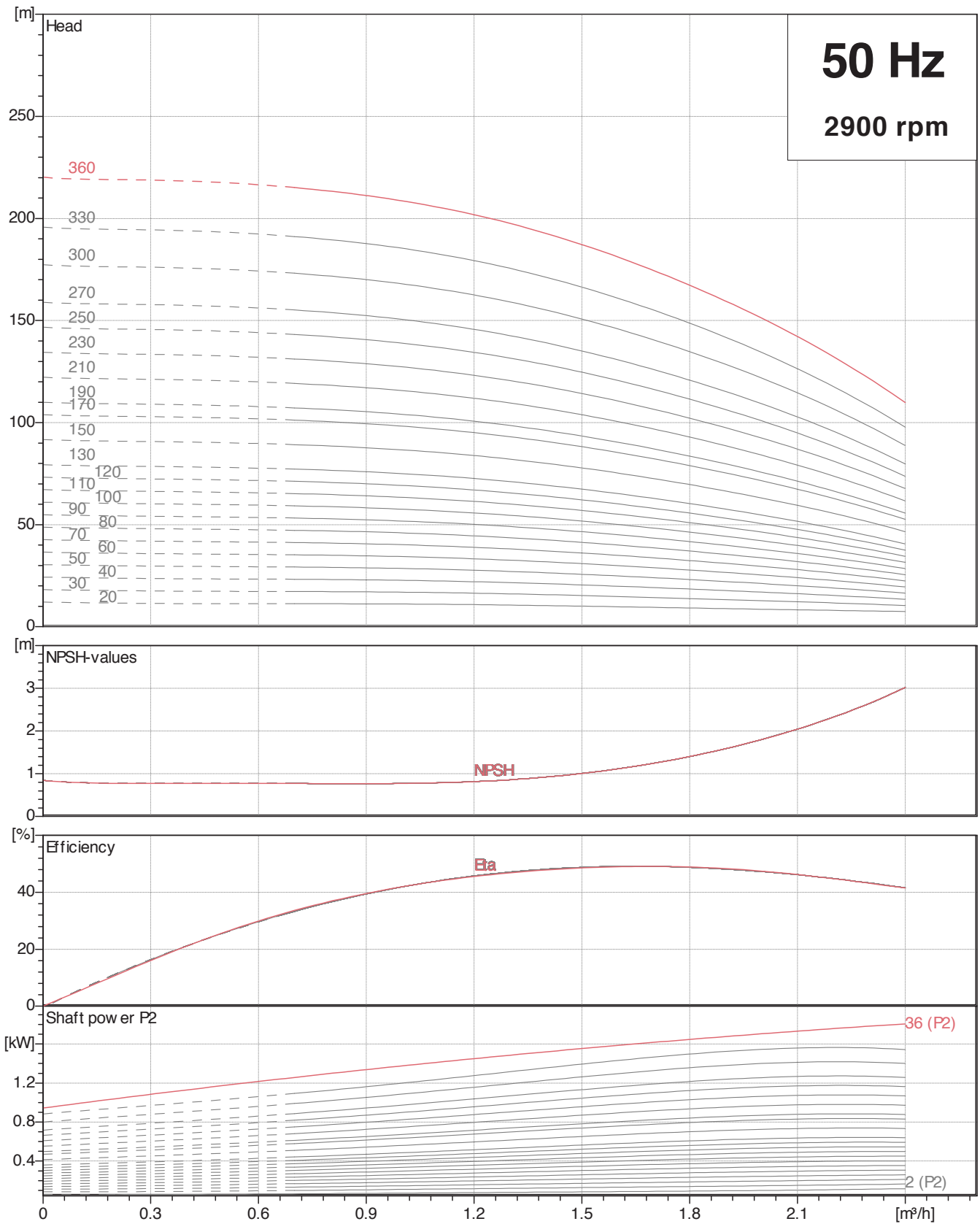
Electrical Data/Operating & Inlet Pressures

Electrical Data of Standard Motors

Motor Type				Nominal Current in [A]					
HP	KW	Pole	Flange	Frame	3~220 V	3~240 V	3~380 V	3~415 V	
0.5	0.37	2	B14/V18	71	1.8	1.9	1.0	1.1	
0.75	0.55			71	2.6	2.7	1.5	1.6	
1.0	0.75			80	3.4	3.6	2.0	2.1	
1.5	1.1			90S	5.1	5.2	2.9	3.0	
2.0	1.5			90L	6.0	6.2	3.5	3.6	
3.0	2.2			90L	9.5	10.0	5.5	5.8	
4.0	3.0			100L	12.1	12.5	7.0	7.2	
5.5	4.0			112M	14.9	15.0	8.6	8.7	
						3~380 V	3~415 V	3~660 V	3~690 V
7.5	5.5				132S	11.9	11.4	6.6	6.6
10.0	7.5		132M	16.7	16.8	9.7	9.7		
						3~380 V	3~415 V		
15	11	2	B5/V1	160M			21.0	19.2	
20.0	15.0			160M			28.4	26.0	
25	18.5			160L			34.7	31.8	
30	22			180M			41.1	37.7	
40	30			180L			55.7	51.0	
50	37			200L			68.3	62.5	
60	45			200L			87.2	78.6	
75	55			250M			101.0	92.5	
100	75			280S			134.0	123.0	

Operating & Inlet Pressures

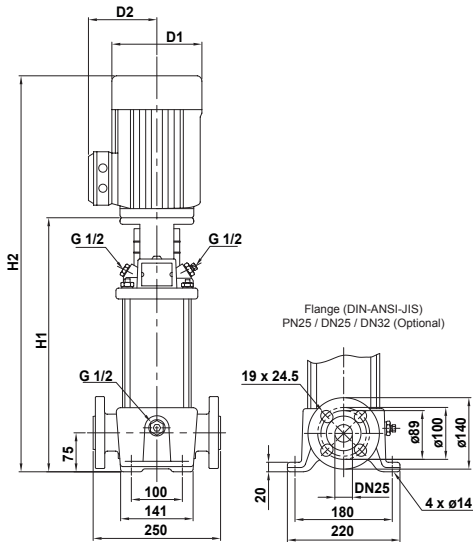
	Stages	Maximum Operating Pressure	Stages	Maximum Inlet Pressures
EMV 1	2 - 36	25 bar	2 - 36	10 bar
EMV 3	2 - 36	25 bar	2 - 29	10 bar
			31 - 36	15 bar
EMV 5	2 - 36	25 bar	2 - 16	10 bar
			18 - 36	15 bar
EMV 10	1 - 16	16 bar	1 - 6	8 bar
	17 - 22	25 bar	7 - 22	10 bar
EMV 15	1 - 10	16 bar	1 - 3	8 bar
	12 - 17	25 bar	4 - 17	10 bar
EMV 20	1 - 10	16 bar	1 - 3	8 bar
	12 - 17	25 bar	4 - 17	10 bar
EMV 32	(1-1)-7	16 bar	(1-1)- 4	4 bar
	(8-2)-14	30 bar	(5-2)-10	10 bar
			(11-2)-14	15 bar
EMV 45	(1-1)-5	16 bar	(1-1)-2	4 bar
	(6-2)-11	30 bar	(3-2)- 5	10 bar
	(12-2)-(13-2)	33 bar	(6-2)-(13-2)	15 bar
EMV 64	(1-1)-5	16 bar	(1-1)-(2-2)	4 bar
	(6-2)-(8-1)	30 bar	(2-1)-(4-2)	10 bar
			(4-1)-(8-1)	15 bar
EMV 90	(1-1)-4	16 bar	(1-1)-1	4 bar
	(5-2)-6	30 bar	(2-1)-(3-2)	10 bar
			3 - 6	15 bar
EMV 120	1-7	30 bar	1-(2-1)	10 bar
			2-(5-1)	15 bar
			(6-1)-7	20 bar
EMV 150	(1-1)-6	30 bar	(1-1)-1	10 bar
			(2-1)-(4-2)	15 bar
			(5-2)-6	20 bar



Dimensions and Weights

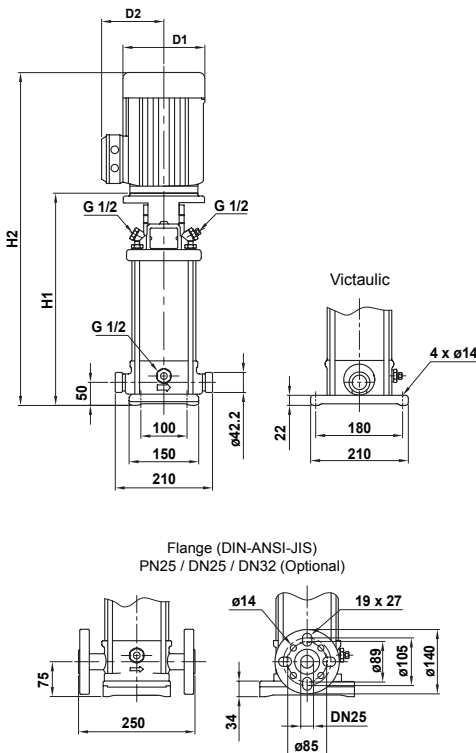
EMV, EMVS, EMVK-1

EMV 1

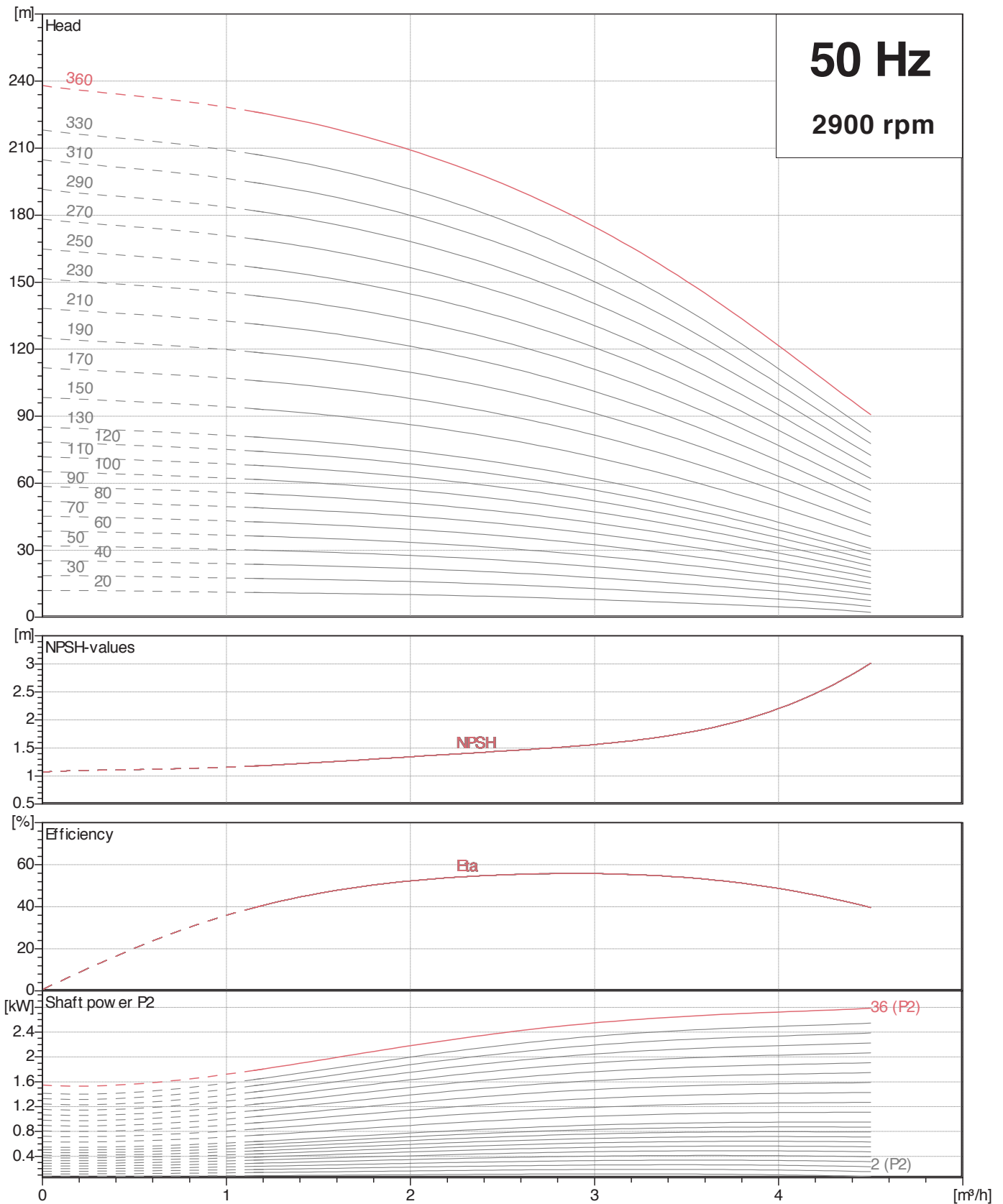


Pump type	Motor	Dimension [mm]				Bare Pump Weight [kg]		Pumpset Weight [kg]	
	P2 [kW]	DIN flange		D1	D2	DIN flange		DIN flange	
		H1	H2						
EMV 1-20	0.37	279	474	141	115	17.1		23.4	
EMV 1-30	0.37	279	474	141	115	17.1		23.4	
EMV 1-40	0.37	297	492	141	115	17.5		23.8	
EMV1-50	0.37	315	510	141	115	17.9		24.2	
EMV 1-60	0.37	333	528	141	115	18.2		24.5	
EMV 1-70	0.37	351	546	141	115	18.6		24.9	
EMV 1-80	0.55	369	564	141	115	18.9		25.8	
EMV 1-90	0.55	387	582	141	115	19.3		26.1	
EMV 1-100	0.55	405	600	141	115	19.7		26.5	
EMV 1-110	0.55	423	618	141	115	20.0		26.9	
EMV 1-120	0.75	447	682	141	115	20.9		29.4	
EMV 1-130	0.75	465	700	141	115	21.3		29.8	
EMV 1-150	0.75	501	736	141	115	22.0		30.5	
EMV1-170	1.1	537	772	141	115	22.7		32.3	
EMV 1-190	1.1	573	808	141	115	23.4		33.1	
EMV 1-210	1.1	609	844	141	115	24.1		33.8	
EMV 1-230	1.1	645	880	141	115	24.8		34.6	
EMV 1-250	1.5	697	988	177	141	25.8		44.0	
EMV 1-270	1.5	733	1024	177	141	26.6		44.8	
EMV 1-300	1.5	787	1078	177	141	27.7		45.9	
EMV 1-330	2.2	841	1132	177	141	28.8		49.9	
EMV 1-360	2.2	895	1186	177	141	29.9		51.0	

EMVS/K 1



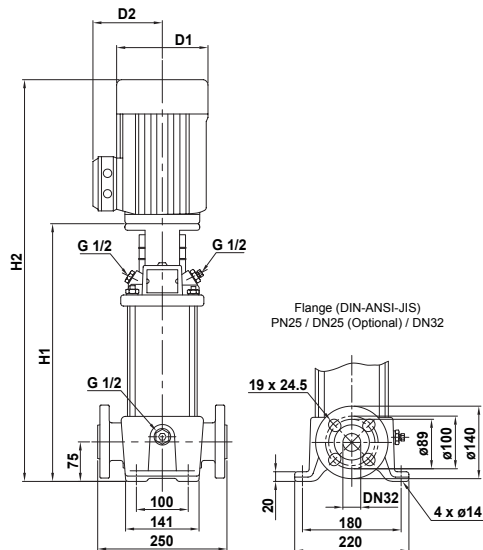
Pump Type	Motor	Dimension[mm]						Bare Pump Weight [kg]		Pumpset Weight [kg]	
	P2 [KW]	Vactaualic		DIN flange		D1	D2	Vactaualic		DIN flange	
		H1	H2	H1	H2			Vactaualic	DIN flange	Vactaualic	DIN flange
EMVS/K 1-20	0.37	257	452	282	477	141	115	13.1	14.0	19.3	20.2
EMVS/K 1-30	0.37	257	452	282	477	141	115	13.1	14.1	19.3	20.3
EMVS/K 1-40	0.37	275	470	300	495	141	115	13.5	14.4	19.7	20.6
EMVS/K 1-50	0.37	293	488	318	513	141	115	13.9	14.8	20.1	21.0
EMVS/K 1-60	0.37	311	506	336	531	141	115	14.2	15.1	20.4	21.4
EMVS/K 1-70	0.37	329	524	354	549	141	115	14.6	15.5	20.8	21.7
EMVS/K 1-80	0.55	347	542	372	567	141	115	14.9	15.8	21.7	22.6
EMVS/K 1-90	0.55	365	560	390	585	141	115	15.3	16.2	22.0	23.0
EMVS/K 1-100	0.55	383	578	408	603	141	115	15.6	16.6	22.4	23.3
EMVS/K 1-110	0.55	401	596	426	621	141	115	16.0	16.9	22.8	23.7
EMVS/K 1-120	0.75	425	660	450	685	141	115	16.8	17.7	25.2	26.1
EMVS/K 1-130	0.75	443	678	468	703	141	115	17.2	18.1	25.6	26.5
EMVS/K 1-150	0.75	479	714	504	739	141	115	17.8	18.8	26.3	27.2
EMVS/K 1-170	1.1	515	750	540	775	141	115	18.6	19.5	28.1	29.1
EMVS/K 1-190	1.1	551	786	576	811	141	115	19.3	20.2	28.8	29.8
EMVS/K 1-210	1.1	587	822	612	847	141	115	20.0	20.9	29.6	30.6
EMVS/K 1-230	1.1	623	858	648	883	141	115	20.8	21.7	30.4	31.3
EMVS/K 1-250	1.5	675	966	700	991	177	141	21.8	22.7	39.8	40.8
EMVS/K 1-270	1.5	711	1002	736	1027	177	141	22.5	23.4	40.6	41.5
EMVS/K 1-300	1.5	765	1056	790	1081	177	141	23.6	24.5	41.7	42.6
EMVS/K 1-330	2.2	819	1110	844	1135	177	141	24.7	25.6	45.6	46.6
EMVS/K 1-360	2.2	873	1164	898	1189	177	141	25.8	26.7	46.7	47.7



Dimensions and Weights

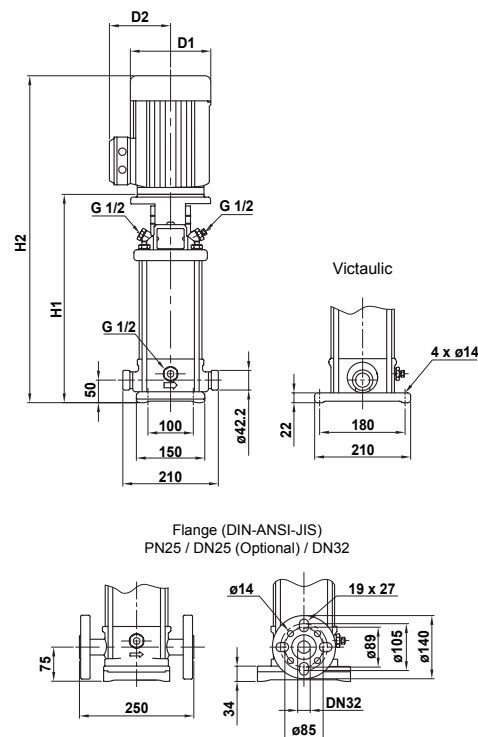
EMV, EMVS, EMVK-3

EMV 3

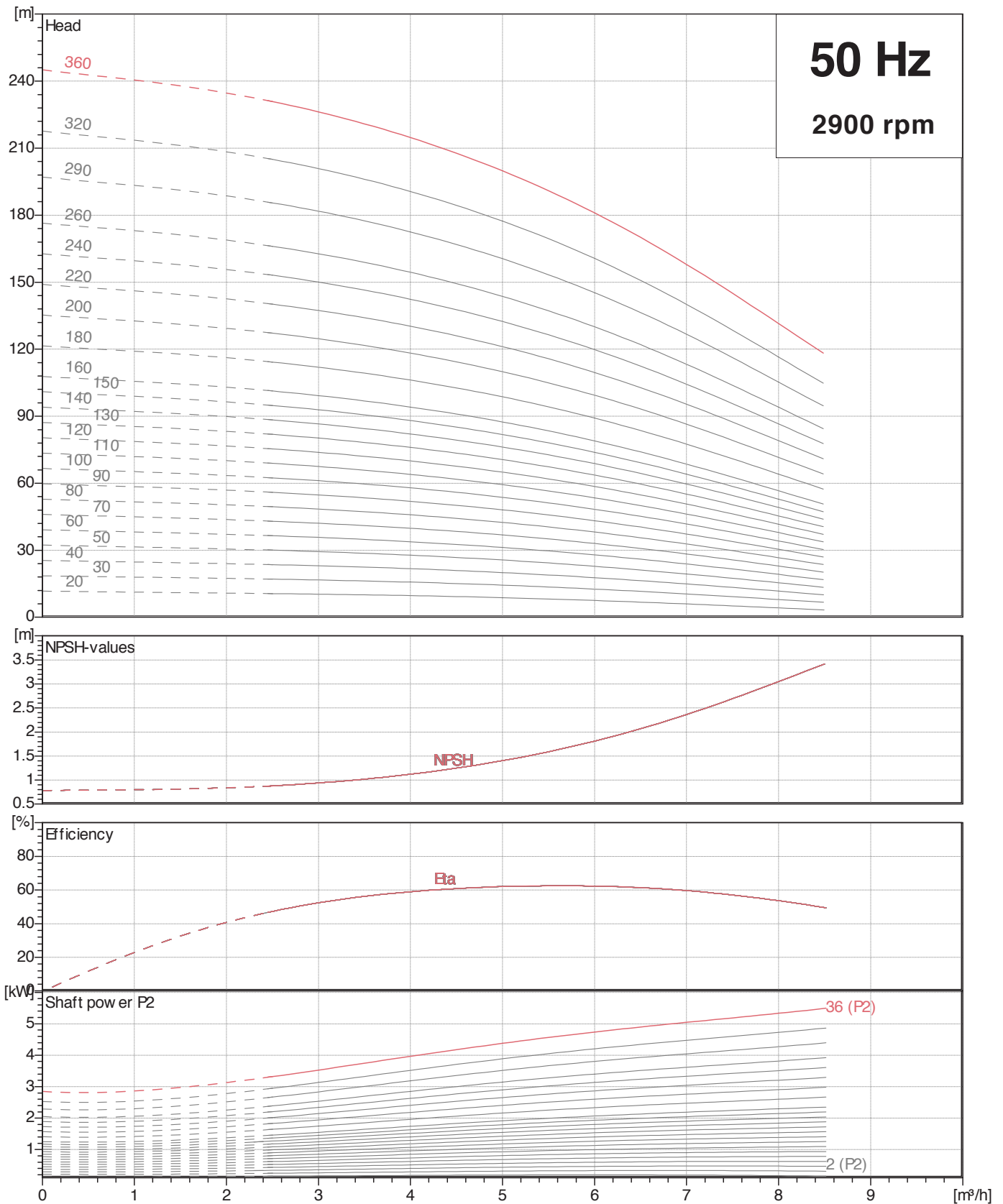


Pump type	Motor	Dimension [mm]				Bare Pump Weight [kg]		Pumpset Weight [kg]	
	P2 [kW]	DIN flange		D1	D2	DIN flange	DIN flange	DIN flange	DIN flange
		H1	H2						
EMV 3-20	0.37	279	474	141	115	17.1			23.4
EMV 3-30	0.37	279	474	141	115	17.1			23.4
EMV 3-40	0.37	297	492	141	115	17.5			23.8
EMV 3-50	0.37	315	510	141	115	17.9			24.2
EMV 3-60	0.55	333	528	141	115	18.2			25.0
EMV 3-70	0.55	351	546	141	115	18.6			25.4
EMV 3-80	0.75	375	610	141	115	19.4			27.9
EMV 3-90	0.75	393	628	141	115	19.8			28.3
EMV 3-100	0.75	411	646	141	115	20.2			28.7
EMV 3-110	1.1	429	664	141	115	20.5			30.2
EMV 3-120	1.1	447	682	141	115	20.9			30.5
EMV 3-130	1.1	465	700	141	115	21.3			30.9
EMV 3-150	1.1	501	736	141	115	22.0			31.6
EMV 3-170	1.5	553	844	177	141	23.0			41.0
EMV 3-190	1.5	589	880	177	141	23.7			41.8
EMV 3-210	2.2	625	916	177	141	24.4			45.3
EMV 3-230	2.2	661	952	177	141	25.1			46.1
EMV 3-250	2.2	697	988	177	141	25.8			46.8
EMV 3-270	2.2	733	1024	177	141	26.6			47.6
EMV 3-290	2.2	769	1060	177	141	27.3			48.3
EMV 3-310	3.0	809	1125	197	147	28.7			56.6
EMV 3-330	3.0	845	1161	197	147	29.5			57.4
EMV 3-360	3.0	899	1215	197	147	30.6			58.5

EMVS/K 3



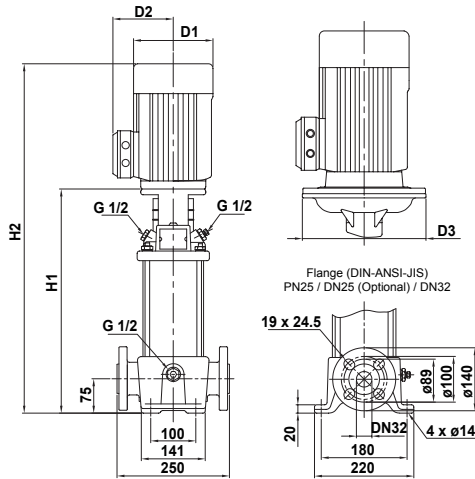
Pump Type	Motor	Dimension[mm]						Bare Pump Weight [kg]		Pumpset Weight [kg]	
	P2 [KW]	Victaulic		DIN flange		D1	D2	Victaulic	DIN flange	Victaulic	DIN flange
		H1	H2	H1	H2						
EMVS/K 3-20	0.37	257	452	282	477	141	115	13.1	14.0	19.3	20.2
EMVS/K 3-30	0.37	257	452	282	477	141	115	13.1	14.1	19.3	20.3
EMVS/K 3-40	0.37	275	470	300	495	141	115	13.5	14.4	19.7	20.6
EMVS/K 3-50	0.37	293	488	318	513	141	115	13.9	14.8	20.1	21.0
EMVS/K 3-60	0.55	311	506	336	531	141	115	14.2	15.1	20.9	21.9
EMVS/K 3-70	0.55	329	524	354	549	141	115	14.6	15.5	21.3	22.2
EMVS/K 3-80	0.75	353	588	378	613	141	115	15.3	16.3	23.7	24.6
EMVS/K 3-90	0.75	371	606	396	631	141	115	15.7	16.6	24.0	25.0
EMVS/K 3-100	0.75	389	624	414	649	141	115	16.0	17.0	24.4	25.4
EMVS/K 3-110	1.1	407	642	432	667	141	115	16.4	17.3	25.9	26.9
EMVS/K 3-120	1.1	425	660	450	685	141	115	16.8	17.7	26.3	27.2
EMVS/K 3-130	1.1	443	678	468	703	141	115	17.2	18.1	26.7	27.6
EMVS/K 3-150	1.1	479	714	504	739	141	115	17.8	18.8	27.4	28.3
EMVS/K 3-170	1.5	531	822	556	847	177	141	18.9	19.8	36.9	37.8
EMVS/K 3-190	1.5	567	858	592	883	177	141	19.6	20.5	37.6	38.5
EMVS/K 3-210	2.2	603	894	628	919	177	141	20.4	21.3	41.2	42.1
EMVS/K 3-230	2.2	639	930	664	955	177	141	21.1	22.0	41.9	42.9
EMVS/K 3-250	2.2	675	966	700	991	177	141	21.8	22.7	42.6	43.6
EMVS/K 3-270	2.2	711	1002	736	1027	177	141	22.5	23.4	43.4	44.3
EMVS/K 3-290	2.2	747	1038	772	1063	177	141	23.2	24.1	44.1	45.1
EMVS/K 3-310	3.0	787	1103	812	1128	197	147	24.3	25.2	52.0	53.0
EMVS/K 3-330	3.0	823	1139	848	1164	197	147	25.0	25.9	52.8	53.7
EMVS/K 3-360	3.0	877	1193	902	1218	197	147	26.1	27.0	53.9	54.8



Dimensions and Weights

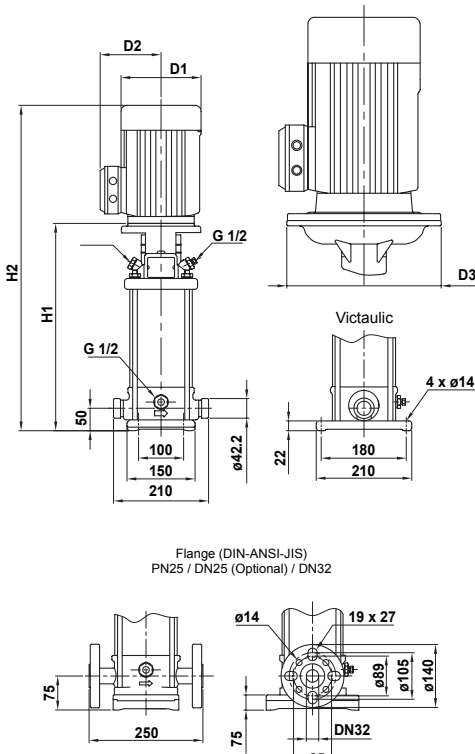
EMV, EMVS, EMVK-5

EMV 5

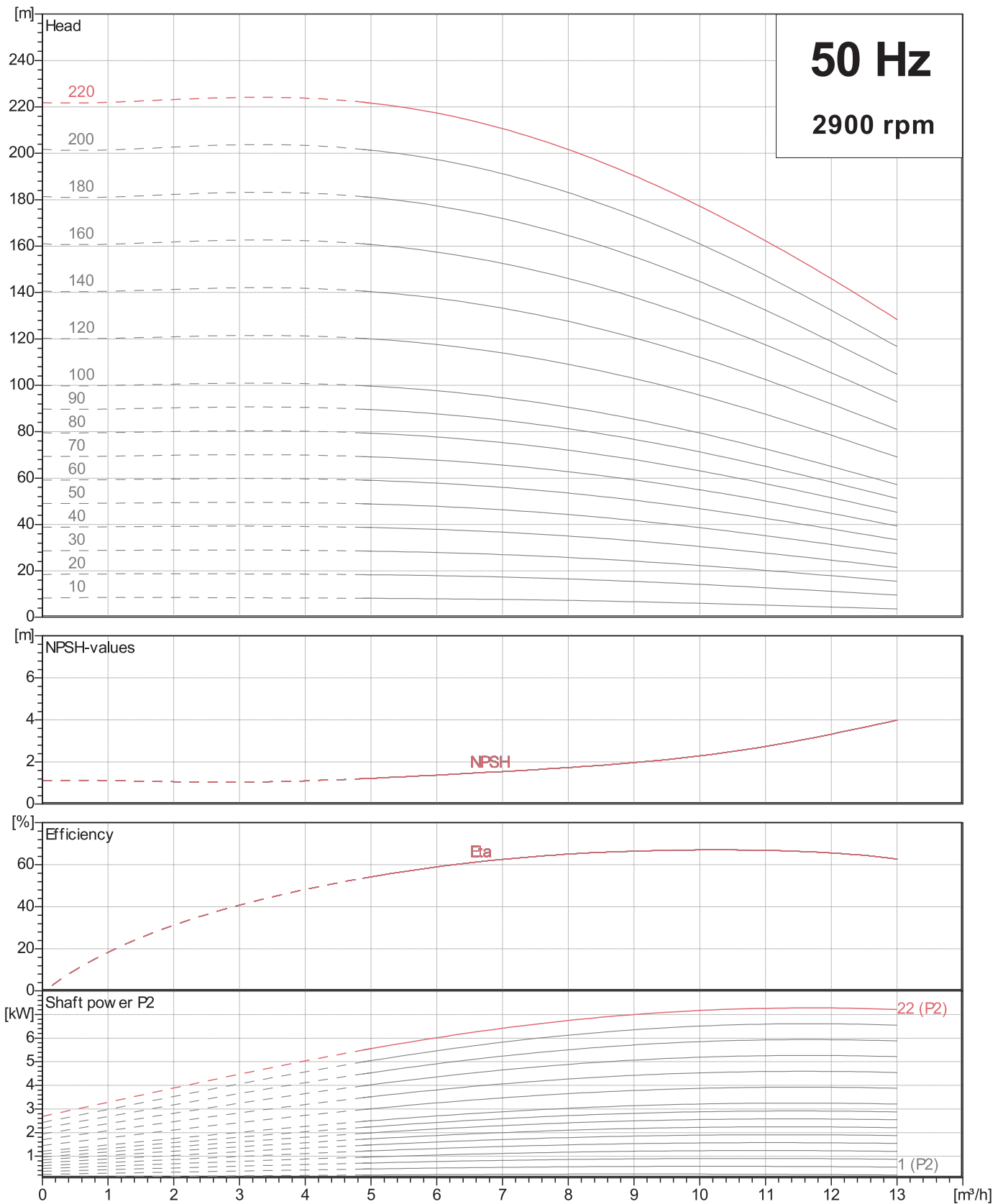


Pump type	Motor	Dimension [mm]					Bare Pump Weight [kg]	Pumpset Weight [kg]		
	P2	DIN flange		D1	D2	D3			DIN flange	DIN flange
		[kW]	H1							
EMV 5-20	0.37	279	474	141	115	-	17.0	23.3		
EMV 5-30	0.55	306	501	141	115	-	17.4	24.2		
EMV 5-40	0.55	333	528	141	115	-	17.9	24.8		
EMV 5-50	0.75	366	601	141	115	-	19.0	27.4		
EMV 5-60	1.1	393	628	141	115	-	19.5	29.1		
EMV 5-70	1.1	420	655	141	115	-	20.0	29.6		
EMV 5-80	1.1	447	682	141	115	-	20.5	30.1		
EMV 5-90	1.5	490	781	177	141	-	21.3	39.3		
EMV 5-100	1.5	517	808	177	141	-	21.8	39.9		
EMV 5-110	2.2	544	835	177	141	-	22.3	43.2		
EMV 5-120	2.2	571	862	177	141	-	22.8	43.7		
EMV 5-130	2.2	598	889	177	141	-	23.3	44.2		
EMV 5-140	2.2	625	916	177	141	-	23.9	44.8		
EMV 5-150	2.2	652	943	177	141	-	24.2	45.2		
EMV 5-160	2.2	679	970	177	141	-	24.8	45.8		
EMV 5-180	3.0	737	1053	197	147	-	26.5	54.3		
EMV 5-200	3.0	791	1107	197	147	-	27.7	55.5		
EMV 5-220	4.0	845	1171	220	161	-	28.5	59.8		
EMV 5-240	4.0	899	1225	220	161	-	29.5	60.8		
EMV 5-260	4.0	953	1279	220	161	-	31.4	62.7		
EMV 5-290	4.0	1034	1360	220	161	-	33.2	64.6		
EMV 5-320	5.5	1145	1507	235	197	300	38.9	90.1		
EMV 5-360	5.5	1253	1615	235	197	300	41.4	92.6		

EMVS/K 5



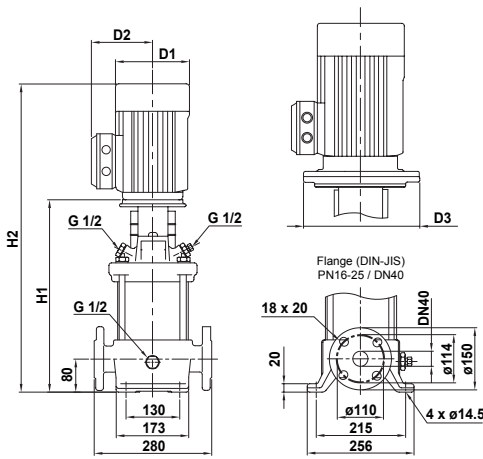
Pump Type	Motor	Dimension[mm]							Bare Pump Weight [kg]		Pumpset Weight [kg]	
	P2	Victaulic		DIN flange		D1	D2	D3	Victaulic	DIN flange	Victaulic	DIN flange
		[KW]	H1	H2	H1							
EMVS/K 5-20	0.37	257	452	282	477	141	115	-	13.0	13.9	19.2	20.1
EMVS/K 5-30	0.55	284	479	309	504	141	115	-	13.6	14.5	20.3	21.2
EMVS/K 5-40	0.55	311	506	336	531	141	115	-	14.1	15.1	20.8	21.8
EMVS/K 5-50	0.75	344	579	369	604	141	115	-	15.1	16.0	23.4	24.3
EMVS/K 5-60	1.1	371	606	396	631	141	115	-	15.6	16.5	25.1	26.0
EMVS/K 5-70	1.1	398	633	423	658	141	115	-	16.1	17.0	25.6	26.5
EMVS/K 5-80	1.1	425	660	450	685	141	115	-	16.6	17.5	26.1	27.1
EMVS/K 5-90	1.5	468	759	493	784	177	141	-	17.5	18.4	35.4	36.4
EMVS/K 5-100	1.5	495	786	520	811	177	141	-	18.1	19.0	36.0	36.9
EMVS/K 5-110	2.2	522	813	547	838	177	141	-	18.6	19.5	39.3	40.3
EMVS/K 5-120	2.2	549	840	574	865	177	141	-	19.1	20.0	39.9	40.8
EMVS/K 5-130	2.2	576	867	601	892	177	141	-	19.6	20.6	40.4	41.4
EMVS/K 5-140	2.2	603	894	628	919	177	141	-	20.2	21.1	41.0	41.9
EMVS/K 5-150	2.2	630	921	655	946	177	141	-	20.7	21.6	41.5	42.5
EMVS/K 5-160	2.2	657	948	682	973	177	141	-	21.2	22.2	42.1	43.0
EMVS/K 5-180	3.0	715	1031	740	1056	197	147	-	22.6	23.6	50.3	51.3
EMVS/K 5-200	3.0	769	1085	794	1110	197	147	-	23.8	24.8	51.6	52.5
EMVS/K 5-220	4.0	823	1149	848	1174	220	161	-	24.7	25.6	55.8	56.8
EMVS/K 5-240	4.0	877	1203	902	1228	220	161	-	25.7	26.6	56.9	57.8
EMVS/K 5-260	4.0	931	1257	956	1282	220	161	-	26.8	27.7	58.0	58.9
EMVS/K 5-290	4.0	1012	1338	1037	1363	220	161	-	28.4	29.3	59.7	60.6
EMVS/K 5-320	5.5	1123	1485	1148	1510	235	197	300	33.9	34.8	84.9	85.8
EMVS/K 5-360	5.5	1231	1593	1256	1618	235	197	300	36.0	37.0	87.1	88.1



Dimensions and Weights

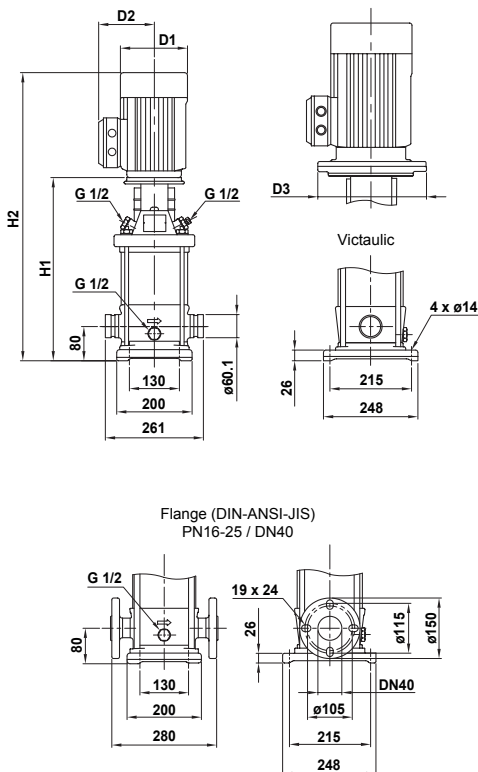
EMV, EMVS, EMVK-10

EMV 10

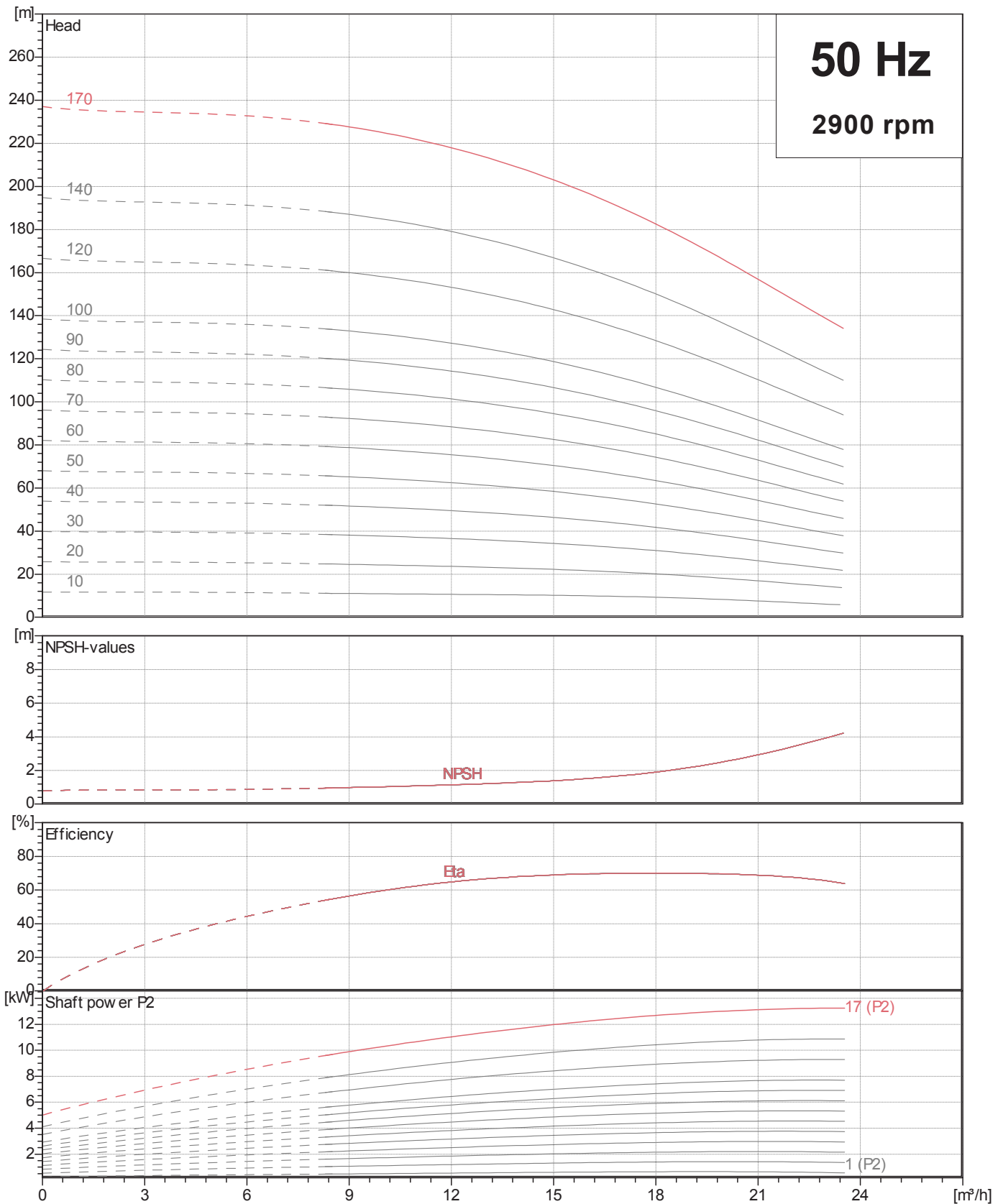


Pump type	Motor	Dimension [mm]					Bare Pump Weight [kg]	Pumpset Weight [kg]		
	P2	DIN flange		D1	D2	D3			DIN flange	DIN flange
		[kW]	H1							
EMV 10-10	0.37	343	538	141	115	-	29.2	35.9		
EMV 10-20	0.75	347	582	141	115	-	29.4	38.2		
EMV 10-30	1.1	377	612	141	115	-	30.4	40.3		
EMV 10-40	1.5	423	714	177	141	-	31.8	50.1		
EMV 10-50	2.2	453	744	177	141	-	32.8	53.9		
EMV 10-60	2.2	483	774	177	141	-	33.8	55.0		
EMV 10-70	3.0	518	834	197	147	-	35.7	63.8		
EMV 10-80	3.0	548	864	197	147	-	36.8	64.9		
EMV 10-90	3.0	578	894	197	147	-	37.8	65.9		
EMV 10-100	4.0	608	934	220	161	-	38.8	70.3		
EMV 10-120	4.0	668	994	220	161	-	40.8	72.4		
EMV 10-140	5.5	760	1122	235	197	300	52.6	104.1		
EMV 10-160	5.5	820	1182	235	197	300	54.6	106.2		
EMV 10-180	7.5	880	1278	235	197	300	55.6	113.6		
EMV 10-200	7.5	940	1338	235	197	300	58.6	116.7		
EMV 10-220	7.5	1000	1398	235	197	300	60.7	118.8		

EMVS/K 10



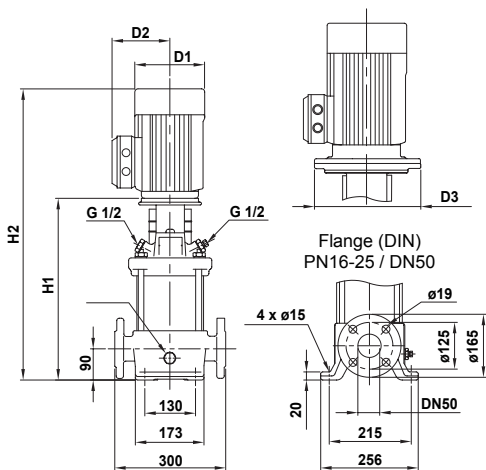
Pump Type	Motor	Dimension[mm]						Bare Pump Weight [kg]		Pumpset Weight [kg]		
	P2	Vactaualic		DIN flange		D1	D2	D3	Vactaualic	DIN flange	Vactaualic	DIN flange
		[kW]	H1	H2	H1							
EMVS/K 10-10	0.37	353	548	353	548	141	115	-	25.0	24.9	31.6	31.4
EMVS/K 10-20	0.75	357	592	357	592	141	115	-	25.6	25.5	34.3	34.2
EMVS/K 10-30	1.1	387	622	387	622	141	115	-	26.6	26.5	36.4	36.3
EMVS/K 10-40	1.5	433	724	433	724	177	141	-	27.9	27.8	46.1	46.0
EMVS/K 10-50	2.2	463	754	463	754	177	141	-	28.9	28.8	50.0	49.8
EMVS/K 10-60	2.2	493	784	493	784	177	141	-	29.9	29.8	51.0	50.8
EMVS/K 10-70	3.0	528	844	528	844	197	147	-	31.1	31.0	59.1	58.9
EMVS/K 10-80	3.0	558	874	558	874	197	147	-	32.2	32.0	60.1	60.0
EMVS/K 10-90	3.0	588	904	588	904	197	147	-	33.1	33.0	61.1	61.0
EMVS/K 10-100	4.0	618	944	618	944	220	161	-	34.1	34.0	65.6	65.4
EMVS/K 10-120	4.0	678	1004	678	1004	220	161	-	36.1	36.0	67.6	67.5
EMVS/K 10-140	5.5	770	1132	770	1132	235	197	300	49.0	48.8	100.4	100.3
EMVS/K 10-160	5.5	830	1192	830	1192	235	197	300	51.0	50.8	102.5	102.4
EMVS/K 10-180	7.5	890	1288	890	1288	235	197	300	53.0	52.9	110.9	110.8
EMVS/K 10-200	7.5	950	1348	950	1348	235	197	300	55.0	54.9	113.0	112.8
EMVS/K 10-220	7.5	1010	1408	1010	1408	235	197	300	57.1	56.9	115.1	114.9



Dimensions and Weights

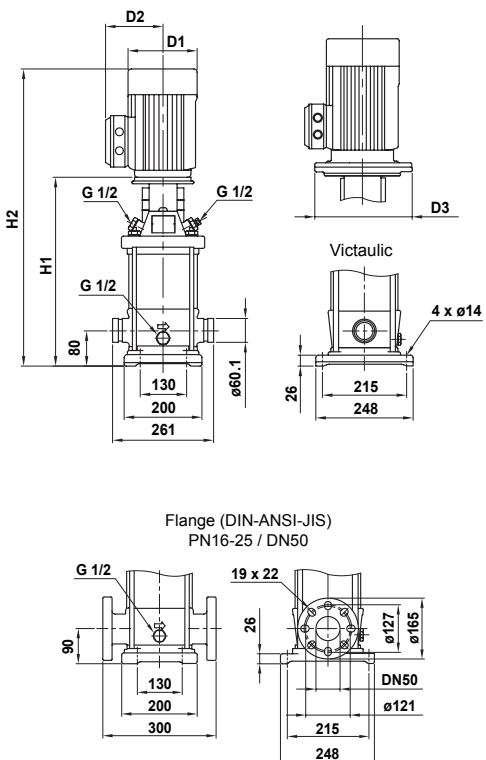
EMV, EMVS, EMVK-15

EMV 15

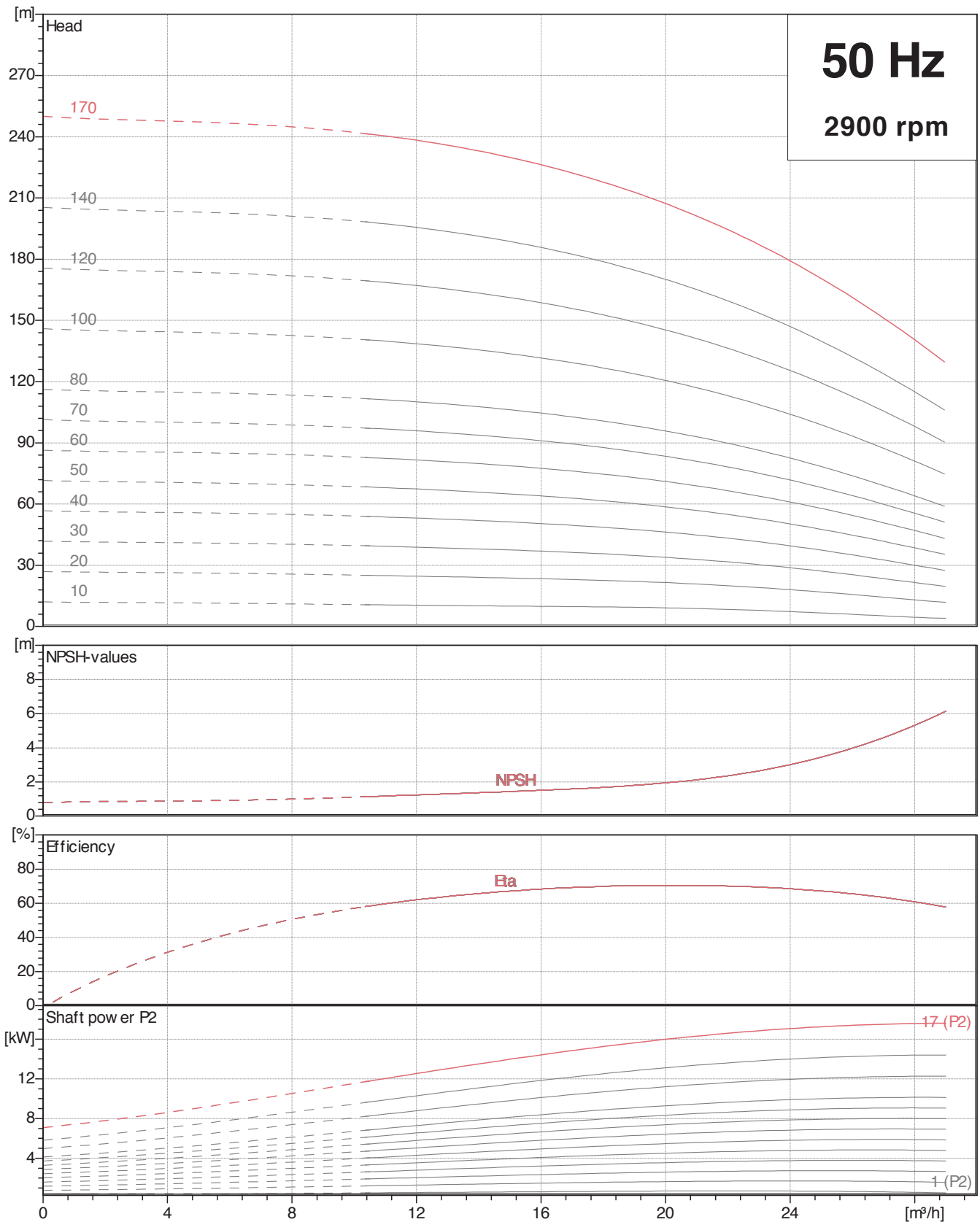


Pump type	Motor	Dimension [mm]					Bare Pump Weight [kg]	Pumpset Weight [kg]		
	P2	DIN flange		D1	D2	D3			DIN flange	DIN flange
		[kW]	H1							
EMV 15-10	1.1	400	635	141	115	-	33.8	43.8		
EMV 15-20	2.2	415	706	177	141	-	34.4	55.7		
EMV 15-30	3.0	465	781	197	147	-	36.8	64.9		
EMV 15-40	4.0	510	836	220	161	-	38.2	69.7		
EMV 15-50	4.0	555	881	220	161	-	39.6	71.2		
EMV 15-60	5.5	632	994	235	197	300	50.8	102.3		
EMV 15-70	5.5	677	1039	235	197	300	52.2	103.8		
EMV 15-80	7.5	722	1120	235	197	300	53.6	111.8		
EMV 15-90	7.5	767	1165	235	197	300	55.0	113.3		
EMV 15-100	11.0	889	1394	318	154	350	62.1	150.0		
EMV 15-120	11.0	979	1484	318	154	350	65.0	153.0		
EMV 15-140	11.0	1069	1574	318	154	350	68.3	156.3		
EMV 15-170	15.0	1204	1714	318	154	350	73.2	171.5		

EMVS/K 15



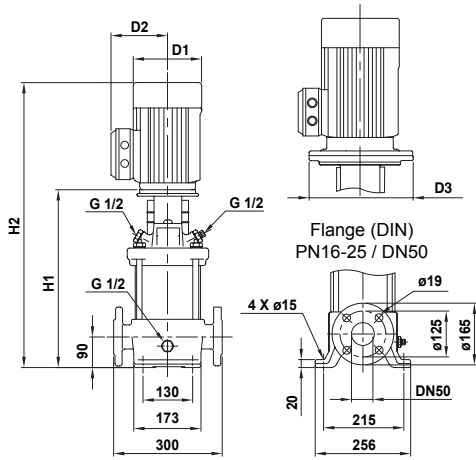
Pump Type	Motor	Dimension[mm]						Bare Pump Weight [kg]		Pumpset Weight [kg]		
	P2	Vactaualic		DIN flange		D1	D2	D3	Vactaualic	DIN flange	Vactaualic	DIN flange
		[kW]	H1	H2	H1							
EMVS/K 15-10	1.1	387	622	397	632	141	115	-	26.2	26.8	36.0	36.6
EMVS/K 15-20	2.2	403	694	413	704	177	141	-	26.7	27.3	47.7	48.3
EMVS/K 15-30	3.0	453	769	463	779	197	147	-	28.3	28.9	56.1	56.7
EMVS/K 15-40	4.0	498	824	508	834	220	161	-	29.7	30.3	61.0	61.6
EMVS/K 15-50	4.0	543	869	553	879	220	161	-	31.1	31.7	62.4	63.0
EMVS/K 15-60	5.5	620	982	630	992	235	197	300	43.3	43.9	94.6	95.3
EMVS/K 15-70	5.5	665	1027	675	1037	235	197	300	44.7	45.3	96.1	96.7
EMVS/K 15-80	7.5	710	1108	720	1118	235	197	300	46.1	46.7	104.1	104.7
EMVS/K 15-90	7.5	755	1153	765	1163	235	197	300	47.5	48.1	105.6	106.2
EMVS/K 15-100	11.0	877	1382	887	1392	318	154	350	55.0	55.6	142.7	143.3
EMVS/K 15-120	11.0	967	1472	977	1482	318	154	350	57.8	58.4	145.5	146.2
EMVS/K 15-140	11.0	1057	1562	1067	1572	318	154	350	60.6	61.2	148.5	149.1
EMVS/K 15-170	15.0	1192	1702	1202	1712	318	154	350	64.9	65.5	162.9	163.5



Dimensions and Weights

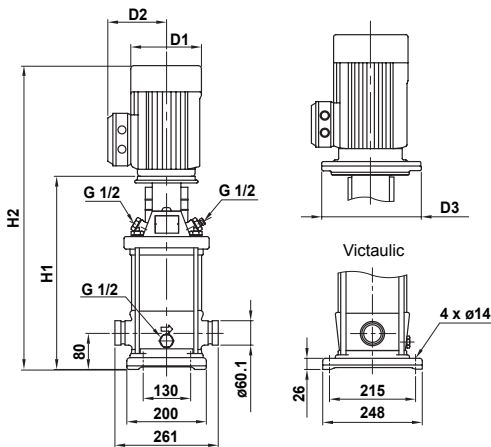
EMV, EMVS, EMVK-20

EMV 20



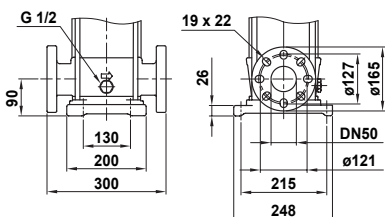
Pump type	Motor	Dimension [mm]					Bare Pump Weight [kg]	Pumpset Weight [kg]		
	P2 [kW]	DIN flange		D1	D2	D3			DIN flange	DIN flange
		H1	H2							
EMV 20-10	1.1	400	636	141	115	-	33.8	43.9		
EMV 20-20	2.2	415	708	177	141	-	34.4	55.7		
EMV 20-30	4.0	465	795	220	161	-	36.8	68.3		
EMV 20-40	5.5	542	910	235	197	300	47.9	99.4		
EMV 20-50	5.5	587	955	235	197	300	49.4	100.8		
EMV 20-60	7.5	632	1038	235	197	300	50.8	108.6		
EMV 20-70	7.5	677	1083	235	197	300	52.2	110.1		
EMV 20-80	11.0	799	1315	318	245	350	59.3	147.1		
EMV 20-100	11.0	889	1405	318	245	350	62.1	150.0		
EMV 20-120	15.0	979	1504	318	245	350	65.0	163.1		
EMV 20-140	15.0	1069	1594	318	245	350	67.9	166.0		
EMV 20-170	18.5	1204	1773	318	245	350	72.2	195.4		

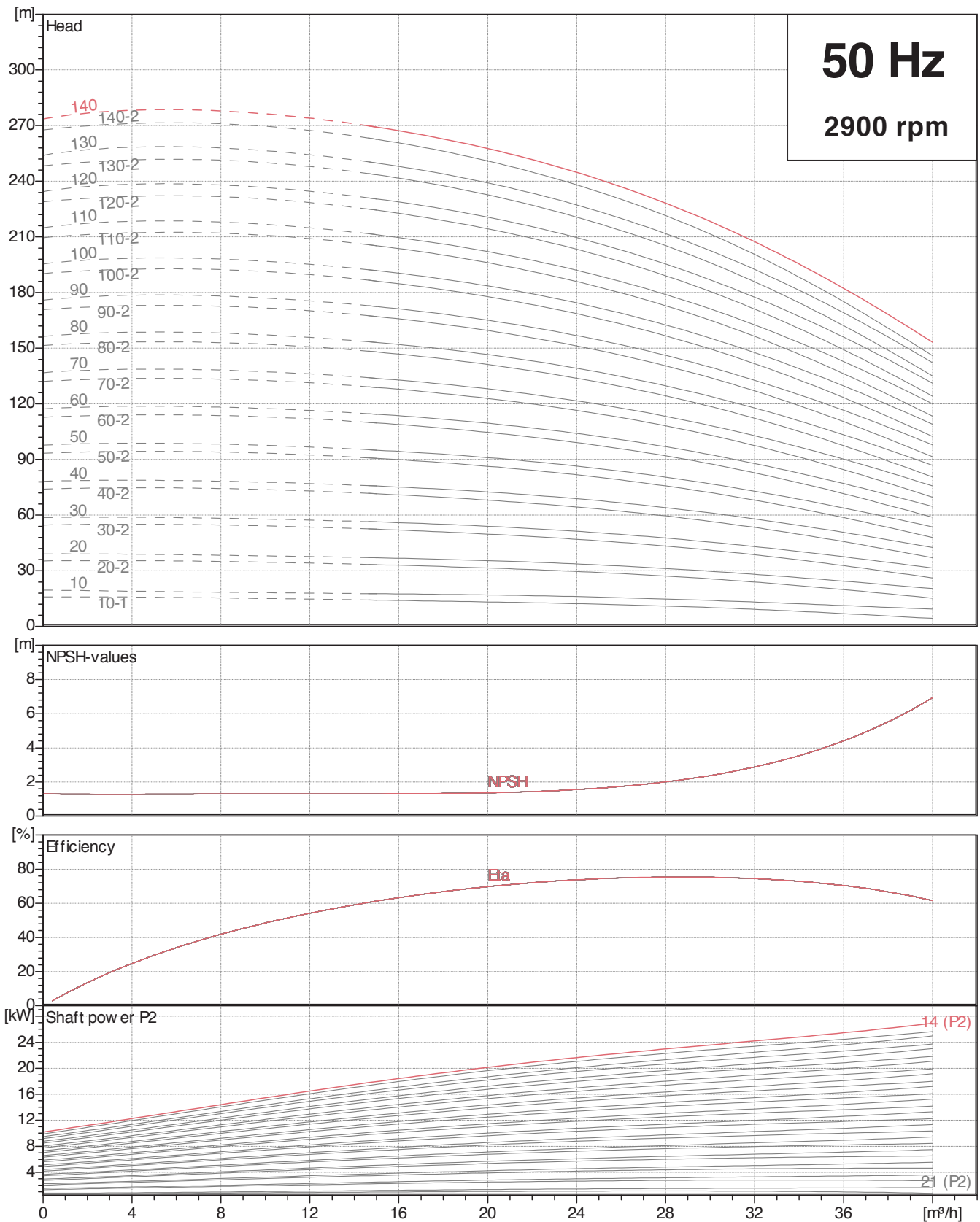
EMVS/K 20



Pump Type	Motor	Dimension[mm]						Bare Pump Weight [kg]		Pumpset Weight [kg]		
	P2 [kW]	Vactaulic		DIN flange		D1	D2	D3	Vactaulic	DIN flange	Vactaulic	DIN flange
		H1	H2	H1	H2							
EMVS/K 20-10	1.1	387	623	397	632	141	115	—	26.2	26.8	36.0	36.6
EMVS/K 20-20	2.2	403	696	413	704	177	141	—	26.7	27.3	47.7	48.3
EMVS/K 20-30	4.0	453	783	463	789	220	161	—	28.3	28.9	59.5	60.2
EMVS/K 20-40	5.5	530	898	540	902	235	197	300	40.5	41.1	91.7	92.3
EMVS/K 20-50	5.5	575	943	585	947	235	197	300	41.9	42.5	93.2	93.8
EMVS/K 20-60	7.5	620	1026	630	1028	235	197	300	43.3	43.9	100.9	101.6
EMVS/K 20-70	7.5	665	1071	675	1073	235	197	300	44.7	45.3	102.4	103.0
EMVS/K 20-80	11.0	787	1303	797	1302	318	245	350	52.2	52.8	139.7	140.3
EMVS/K 20-100	11.0	877	1393	887	1392	318	245	350	55.1	55.7	142.7	143.3
EMVS/K 20-120	15.0	967	1492	977	1487	318	245	350	57.8	58.4	155.7	156.3
EMVS/K 20-140	15.0	1057	1582	1067	1577	318	245	350	60.7	61.3	158.6	159.2
EMVS/K 20-170	18.5	1192	1761	1202	1752	318	245	350	64.9	65.5	187.8	188.5

Flange (DIN-ANSI-JIS)
PN16-25/DN50

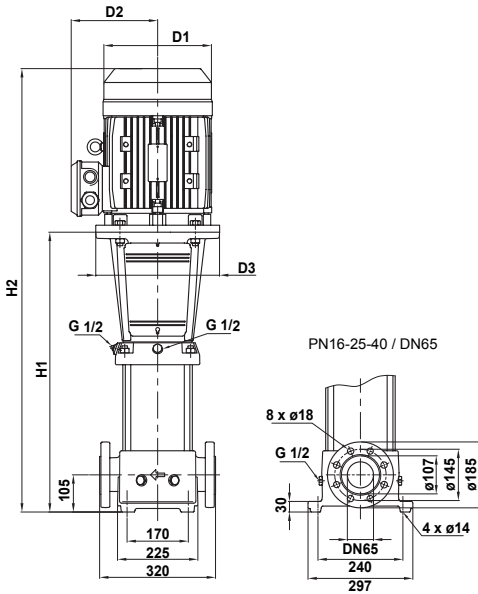




Dimensions and Weights

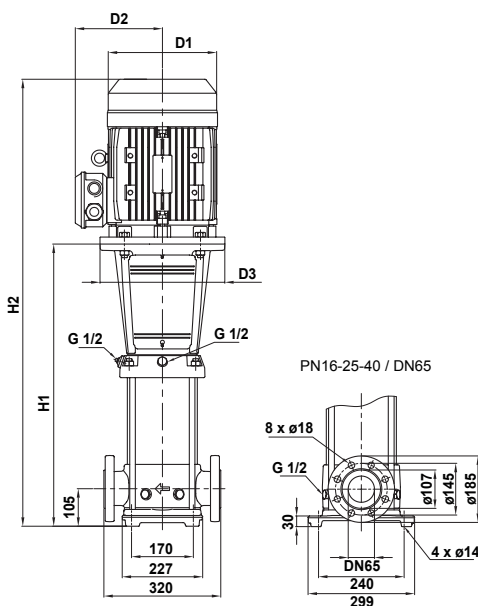
EMV, EMVS, EMVK-32

EMV 32

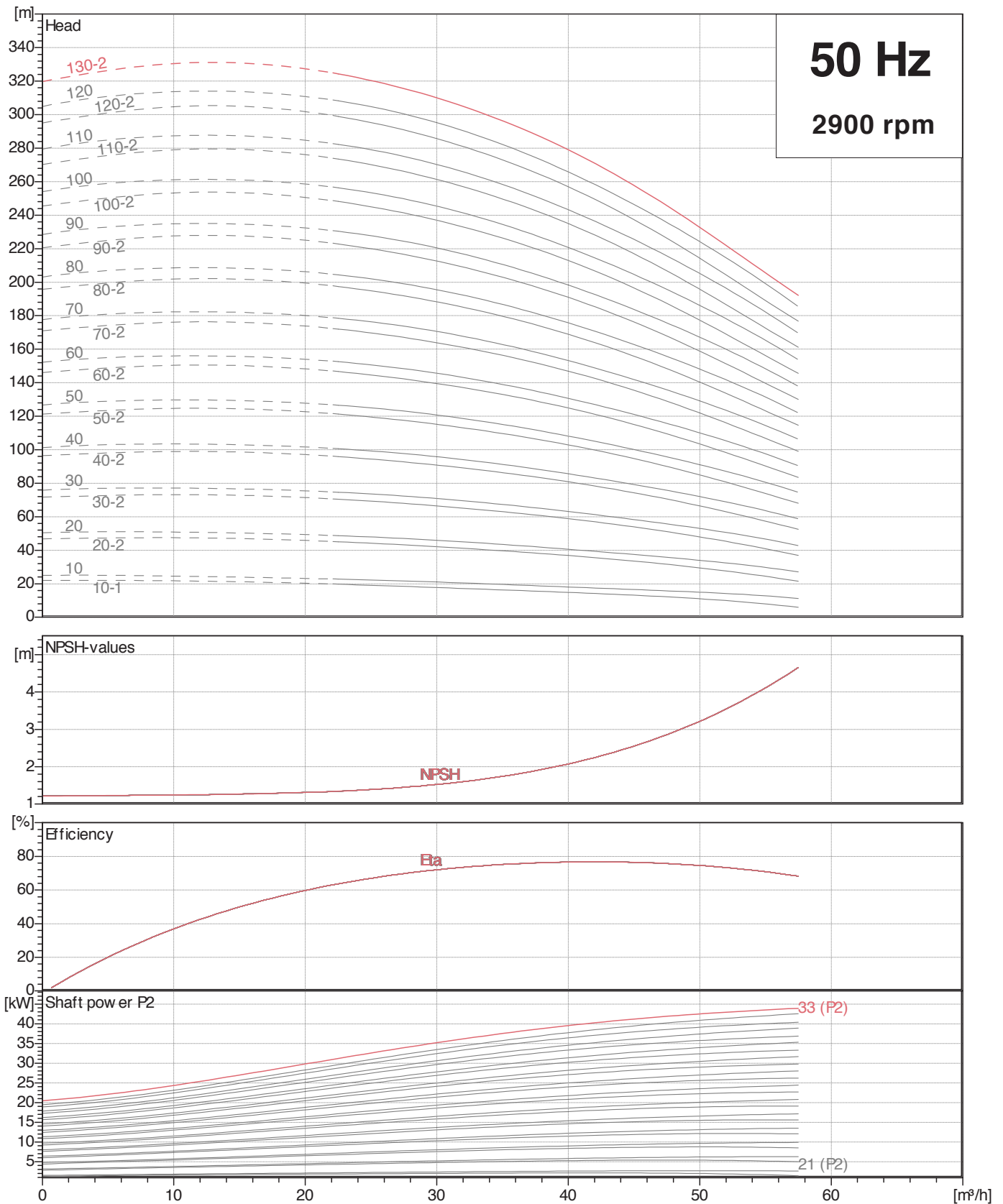


Pump type	Motor	Dimension [mm]					Bare Pump Weight [kg]	Pumpset Weight [kg]
	P2	DIN flange		D1	D2	D3	DIN flange	DIN flange
	[kW]	H1	H2					
EMV 32-10-1	1.5	504	795	177	141	280	52.5	71.5
EMV 32-10	2.2	504	795	177	141	280	52.5	74.3
EMV 32-20-2	3.0	574	935	197	147	280	55.5	84.2
EMV 32-20	4.0	574	900	220	161	280	55.5	87.6
EMV 32-30-2	5.5	644	1006	235	197	300	58.4	110.2
EMV 32-30	5.5	644	1006	235	197	300	58.4	110.2
EMV 32-40-2	7.5	714	1112	235	197	300	61.4	119.5
EMV 32-40	7.5	714	1112	235	197	300	61.4	119.5
EMV 32-50-2	11.0	894	1399	318	245	350	75.0	163.3
EMV 32-50	11.0	894	1399	318	245	350	75.0	163.3
EMV 32-60-2	11.0	964	1469	318	245	350	78.0	166.3
EMV 32-60	11.0	964	1469	318	245	350	78.0	166.3
EMV 32-70-2	15.0	1034	1544	318	245	350	81.0	179.5
EMV 32-70	15.0	1034	1544	318	245	350	81.0	179.5
EMV 32-80-2	15.0	1104	1614	318	245	350	84.0	182.6
EMV 32-80	15.0	1104	1614	318	245	350	84.0	182.6
EMV 32-90-2	18.5	1174	1724	318	245	350	87.0	210.6
EMV 32-90	18.5	1174	1724	318	245	350	87.0	210.6
EMV 32-100-2	18.5	1244	1794	318	245	350	89.0	212.7
EMV 32-100	18.5	1244	1794	318	245	350	90.0	213.7
EMV 32-110-2	22.0	1314	1894	358	265	350	92.0	258.8
EMV 32-110	22.0	1314	1894	358	265	350	92.0	258.8
EMV 32-120-2	22.0	1384	1964	358	265	350	94.0	260.8
EMV 32-120	22.0	1384	1964	358	265	350	94.0	260.8
EMV 32-130-2	30.0	1454	2114	420	295	400	108.0	328.2
EMV 32-130	30.0	1454	2114	420	295	400	108.0	328.2
EMV 32-140-2	30.0	1524	2184	420	295	400	111.0	331.3
EMV 32-140	30.0	1524	2184	420	295	400	111.0	331.3

EMVS/K 32



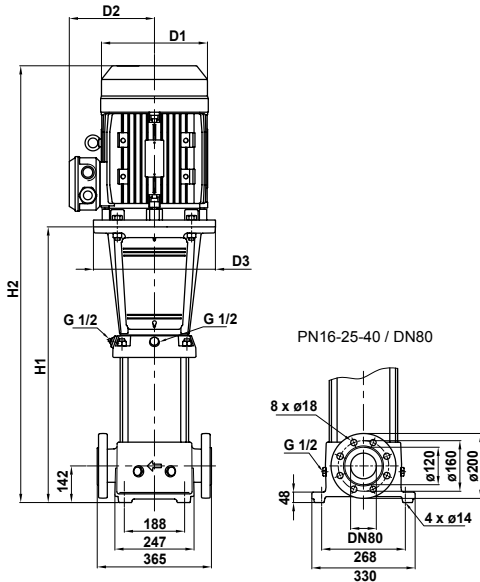
Pump type	Motor	Dimension [mm]					Bare Pump Weight [kg]	Pumpset Weight [kg]
	P2	DIN flange		D1	D2	D3	DIN flange	DIN flange
	[kW]	H1	H2					
EMVS/K 32-10-1	1.5	504	795	177	141	280	47.6	66.5
EMVS/K 32-10	2.2	504	795	177	141	280	47.7	69.3
EMVS/K 32-20-2	3.0	574	935	197	147	280	50.6	79.1
EMVS/K 32-20	4.0	574	900	220	161	280	50.6	82.5
EMVS/K 32-30-2	5.5	644	1006	235	197	300	53.5	105.1
EMVS/K 32-30	5.5	644	1006	235	197	300	53.5	105.1
EMVS/K 32-40-2	7.5	714	1112	235	197	300	56.5	114.5
EMVS/K 32-40	7.5	714	1112	235	197	300	56.6	114.6
EMVS/K 32-50-2	11.0	894	1399	318	245	350	70.1	158.2
EMVS/K 32-50	11.0	894	1399	318	245	350	70.2	158.3
EMVS/K 32-60-2	11.0	964	1469	318	245	350	73.1	161.3
EMVS/K 32-60	11.0	964	1469	318	245	350	73.2	161.4
EMVS/K 32-70-2	15.0	1034	1544	318	245	350	76.2	174.6
EMVS/K 32-70	15.0	1034	1544	318	245	350	76.2	174.6
EMVS/K 32-80-2	15.0	1104	1614	318	245	350	79.4	177.9
EMVS/K 32-80	15.0	1104	1614	318	245	350	79.4	177.9
EMVS/K 32-90-2	18.5	1174	1724	318	245	350	82.0	205.5
EMVS/K 32-90	18.5	1174	1724	318	245	350	82.1	205.6
EMVS/K 32-100-2	18.5	1244	1794	318	245	350	84.6	208.1
EMVS/K 32-100	18.5	1244	1794	318	245	350	84.7	208.2
EMVS/K 32-110-2	22.0	1314	1894	358	265	350	87.0	253.6
EMVS/K 32-110	22.0	1314	1894	358	265	350	87.0	253.6
EMVS/K 32-120-2	22.0	1384	1964	358	265	350	89.6	256.3
EMVS/K 32-120	22.0	1384	1964	358	265	350	89.6	256.3
EMVS/K 32-130-2	30.0	1454	2114	420	295	400	103.5	323.6
EMVS/K 32-130	30.0	1454	2114	420	295	400	103.5	323.6
EMVS/K 32-140-2	30.0	1524	2184	420	295	400	106.1	326.3
EMVS/K 32-140	30.0	1524	2184	420	295	400	106.1	326.3



Dimensions and Weights

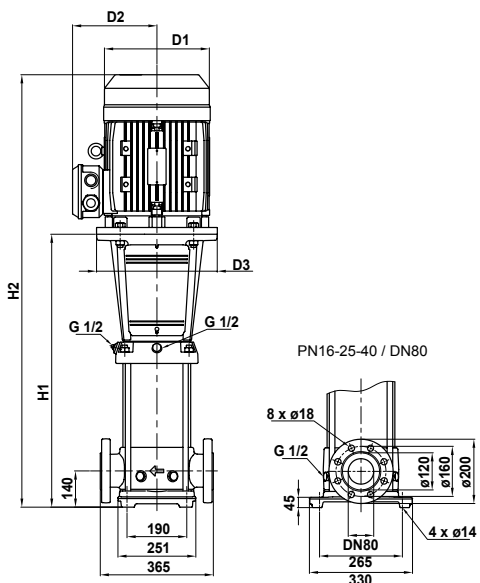
EMV, EMVS, EMVK-45

EMV 45

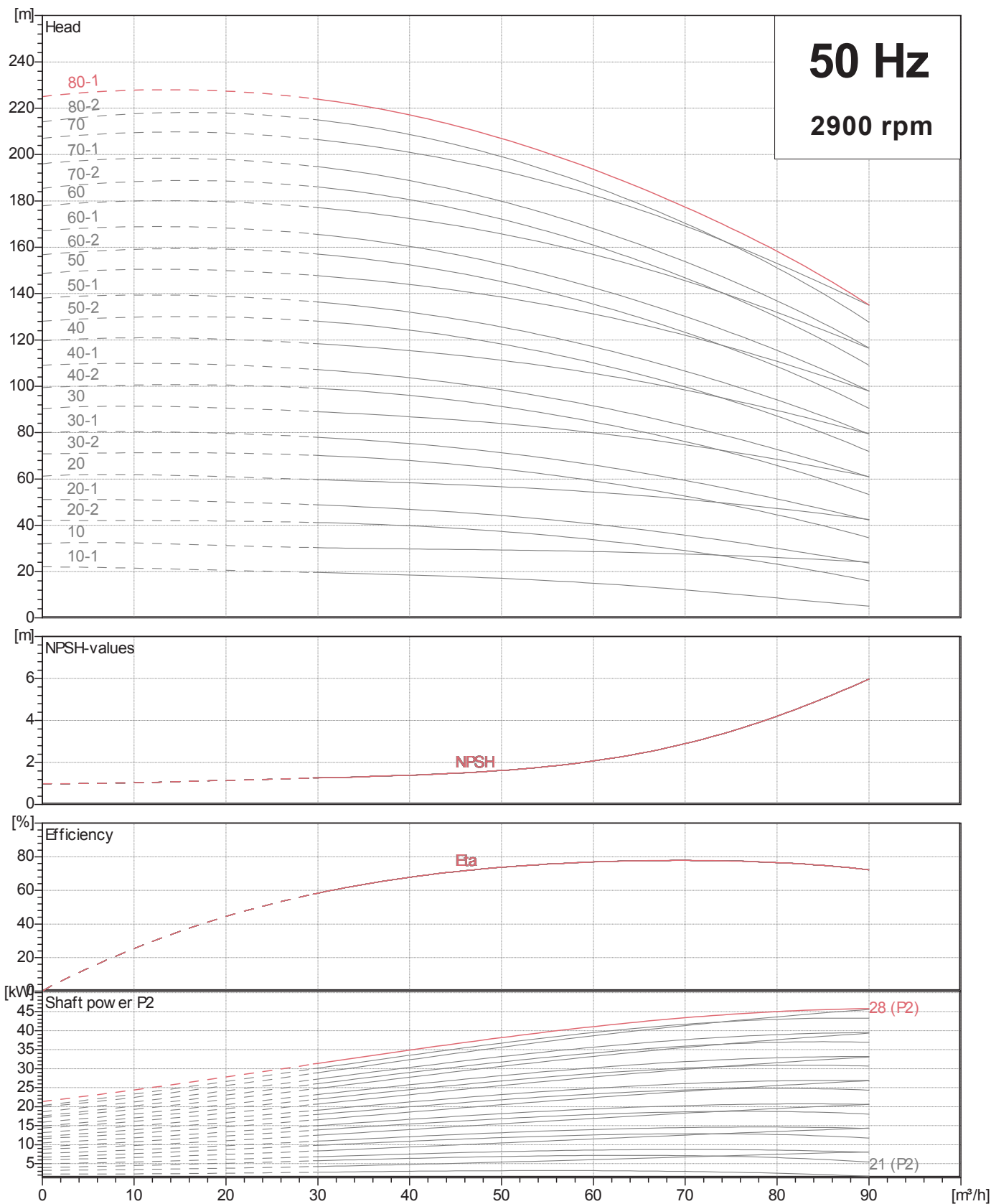


Pump type	Motor	Dimension [mm]					Bare Pump Weight [kg]	Pumpset Weight [kg]
	P2	DIN flange		D1	D2	D3	DIN flange	DIN flange
	[kW]	H1	H2					
EMV 45-10-1	3.0	561	877	197	147	280	62.8	91.7
EMV 45-10	4.0	561	887	220	161	280	62.8	95.1
EMV 45-20-2	5.5	641	1003	235	197	300	66.3	118.3
EMV 45-20	7.5	641	1039	235	197	300	66.4	124.6
EMV 45-30-2	11.0	831	1336	318	245	350	80.6	169.0
EMV 45-30	11.0	831	1336	318	245	350	80.6	169.0
EMV 45-40-2	15.0	911	1421	318	245	350	84.3	182.9
EMV 45-40	15.0	911	1421	318	245	350	84.3	182.9
EMV 45-50-2	18.5	991	1541	318	245	350	87.9	211.6
EMV 45-50	18.5	991	1541	318	245	350	87.9	211.6
EMV 45-60-2	22.0	1071	1651	358	265	350	91.4	258.1
EMV 45-60	22.0	1071	1651	358	265	350	91.4	258.1
EMV 45-70-2	30.0	1151	1811	420	295	400	106.3	326.4
EMV 45-70	30.0	1151	1811	420	295	400	106.3	326.5
EMV 45-80-2	30.0	1231	1891	420	295	400	109.9	330.2
EMV 45-80	30.0	1231	1891	420	295	400	111.0	331.3
EMV 45-90-2	30.0	1311	1971	420	295	400	113.6	334.0
EMV 45-90	37.0	1311	1971	420	295	400	113.6	347.0
EMV 45-100-2	37.0	1391	2051	420	295	400	117.2	350.7
EMV 45-100	37.0	1391	2051	420	295	400	117.2	350.7
EMV 45-110-2	45.0	1471	2161	470	325	450	123.8	412.5
EMV 45-110	45.0	1471	2161	470	325	450	123.8	412.5
EMV 45-120-2	45.0	1551	2241	470	325	450	127.4	416.2
EMV 45-120	45.0	1551	2241	470	325	450	127.4	416.2
EMV 45-130-2	45.0	1631	2321	470	325	450	131.0	419.9

EMVS/K 45



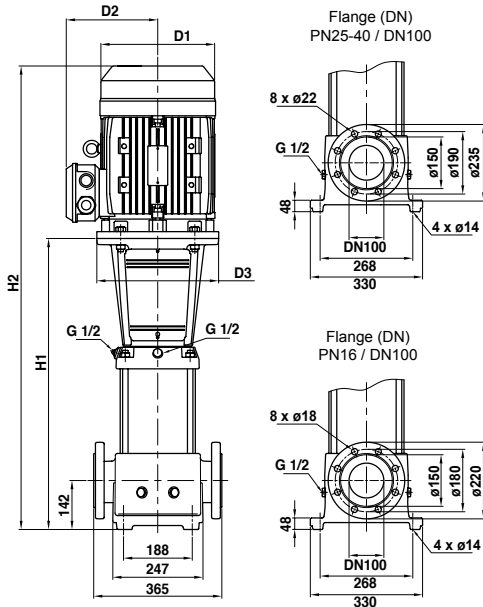
Pump type	Motor	Dimension [mm]					Bare Pump Weight [kg]	Pumpset Weight [kg]
	P2	DIN flange		D1	D2	D3	DIN flange	DIN flange
	[kW]	H1	H2					
EMVS/K 45-10-1	3.0	559	875	197	147	280	54.3	82.9
EMVS/K 45-10	4.0	559	885	220	161	280	54.3	86.3
EMVS/K 45-20-2	5.5	639	1001	235	197	300	57.8	109.5
EMVS/K 45-20	7.5	639	1037	235	197	300	57.8	115.8
EMVS/K 45-30-2	11.0	829	1334	318	245	350	72.0	160.2
EMVS/K 45-30	11.0	829	1334	318	245	350	72.1	160.2
EMVS/K 45-40-2	15.0	909	1419	318	245	350	75.7	174.1
EMVS/K 45-40	15.0	909	1419	318	245	350	75.7	174.1
EMVS/K 45-50-2	18.5	989	1539	318	245	350	79.4	202.8
EMVS/K 45-50	18.5	989	1539	318	245	350	79.4	202.8
EMVS/K 45-60-2	22.0	1069	1649	358	265	350	82.8	249.3
EMVS/K 45-60	22.0	1069	1649	358	265	350	82.8	249.3
EMVS/K 45-70-2	30.0	1149	1809	420	295	400	97.7	317.7
EMVS/K 45-70	30.0	1149	1809	420	295	400	97.7	317.7
EMVS/K 45-80-2	30.0	1229	1889	420	295	400	101.4	321.4
EMVS/K 45-80	30.0	1229	1889	420	295	400	101.4	321.5
EMVS/K 45-90-2	30.0	1309	1969	420	295	400	105.0	325.2
EMVS/K 45-90	37.0	1309	1969	420	295	400	105.1	338.2
EMVS/K 45-100-2	37.0	1389	2049	420	295	400	108.7	341.9
EMVS/K 45-100	37.0	1389	2049	420	295	400	108.7	341.9
EMVS/K 45-110-2	45.0	1469	2159	470	325	450	115.3	403.7
EMVS/K 45-110	45.0	1469	2159	470	325	450	115.3	403.7
EMVS/K 45-120-2	45.0	1549	2239	470	325	450	118.9	407.4
EMVS/K 45-120	45.0	1549	2239	470	325	450	118.9	407.4
EMVS/K 45-130-2	45.0	1629	2319	470	325	450	122.5	411.1



Dimensions and Weights

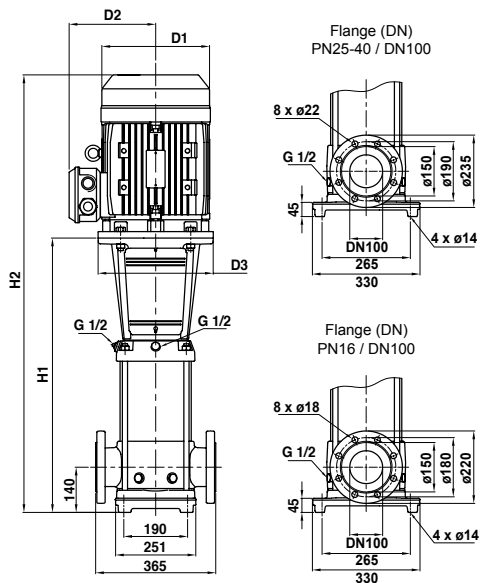
EMV, EMVS, EMVK-64

EMV 64

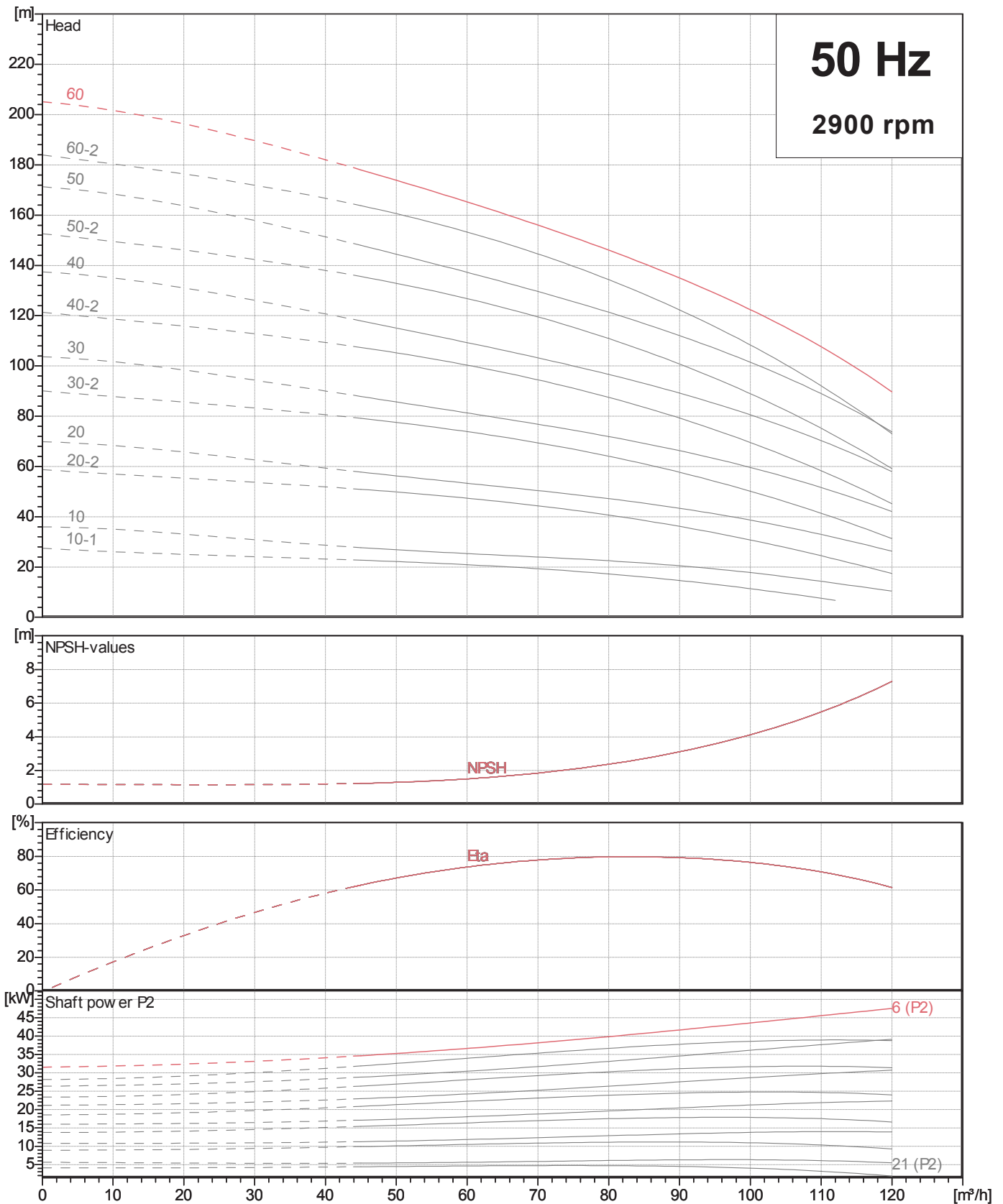


Pump type	Motor	Dimension [mm]					Bare Pump Weight [kg]	Pumpset Weight [kg]
	P2 [kW]	DIN flange		D1	D2	D3	DIN flange	DIN flange
		H1	H2					
EMV 64-10-1	4.0	563	889	220	161	280	56.8	88.9
EMV 64-10	5.5	563	613	235	197	300	56.6	108.3
EMV 64-20-2	7.5	646	702	235	197	300	60.6	118.7
EMV 64-20-1	11.0	756	1261	318	245	350	71.2	159.3
EMV 64-20	11.0	756	1261	318	245	350	71.2	159.3
EMV 64-30-2	15.0	838	1348	318	245	350	75.6	174.0
EMV 64-30-1	15.0	838	1348	318	245	350	75.6	174.0
EMV 64-30	18.5	838	1388	318	245	350	75.6	198.9
EMV 64-40-2	18.5	921	1471	318	245	350	79.5	202.9
EMV 64-40-1	22.0	921	1501	358	265	350	79.3	245.7
EMV 64-40	22.0	921	1501	358	265	350	79.3	245.7
EMV 64-50-2	30.0	1003	1663	420	295	400	94.4	314.3
EMV 64-50-1	30.0	1003	1663	420	295	400	94.4	314.3
EMV 64-50	30.0	1003	1663	420	295	400	94.4	314.3
EMV 64-60-2	30.0	1086	1746	420	295	400	98.3	318.2
EMV 64-60-1	37.0	1086	1746	420	295	400	98.3	331.2
EMV 64-60	37.0	1086	1746	420	295	400	98.3	331.2
EMV 64-70-2	37.0	1168	1828	420	295	400	102.2	335.3
EMV 64-70-1	37.0	1168	1828	420	295	400	102.2	335.3
EMV 64-70	45.0	1172	1862	470	325	450	105.2	393.4
EMV 64-80-2	45.0	1255	1945	470	325	450	109.2	397.5
EMV 64-80-1	45.0	1255	1945	470	325	450	109.2	397.5

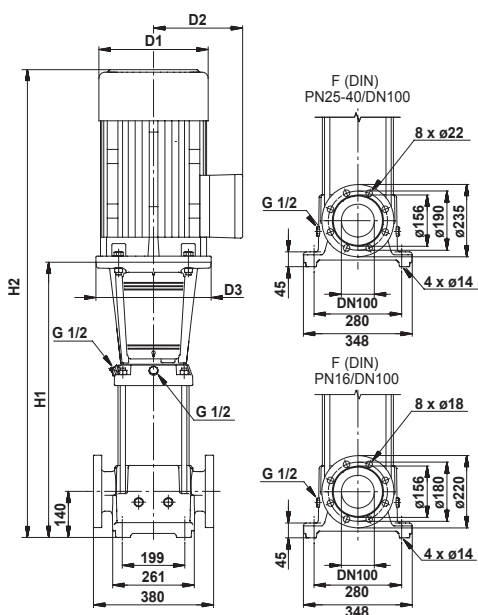
EMVS/K 64



Pump type	Motor	Dimension [mm]					Bare Pump Weight [kg]	Pumpset Weight [kg]
	P2 [kW]	DIN flange		D1	D2	D3	DIN flange	DIN flange
		H1	H2					
EMVS/K 64-10-1	4.0	563	889	220	161	280	49.9	81.8
EMVS/K 64-10	5.5	563	613	235	197	300	49.8	101.3
EMVS/K 64-20-2	7.5	646	702	235	197	300	53.8	111.7
EMVS/K 64-20-1	11.0	756	1261	318	245	350	64.3	152.3
EMVS/K 64-20	11.0	756	1261	318	245	350	64.3	152.3
EMVS/K 64-30-2	15.0	838	1348	318	245	350	68.3	166.5
EMVS/K 64-30-1	15.0	838	1348	318	245	350	68.3	166.5
EMVS/K 64-30	18.5	838	1388	318	245	350	68.3	191.4
EMVS/K 64-40-2	18.5	921	1471	318	245	350	72.2	195.4
EMVS/K 64-40-1	22.0	921	1501	358	265	350	72.0	238.1
EMVS/K 64-40	22.0	921	1501	358	265	350	72.0	238.1
EMVS/K 64-50-2	30.0	1003	1663	420	295	400	87.1	306.7
EMVS/K 64-50-1	30.0	1003	1663	420	295	400	87.1	306.7
EMVS/K 64-50	30.0	1003	1663	420	295	400	87.1	306.7
EMVS/K 64-60-2	30.0	1086	1746	420	295	400	91.0	310.7
EMVS/K 64-60-1	37.0	1086	1746	420	295	400	91.0	323.7
EMVS/K 64-60	37.0	1086	1746	420	295	400	91.0	323.7
EMVS/K 64-70-2	37.0	1168	1828	420	295	400	94.9	327.7
EMVS/K 64-70-1	37.0	1168	1828	420	295	400	94.9	327.7
EMVS/K 64-70	45.0	1172	1862	470	325	450	97.9	385.8
EMVS/K 64-80-2	45.0	1255	1945	470	325	450	101.9	390.0
EMVS/K 64-80-1	45.0	1255	1945	470	325	450	101.9	390.0

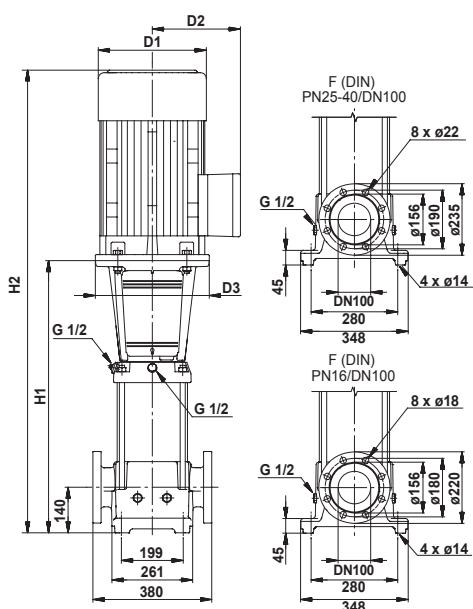


EMV 90

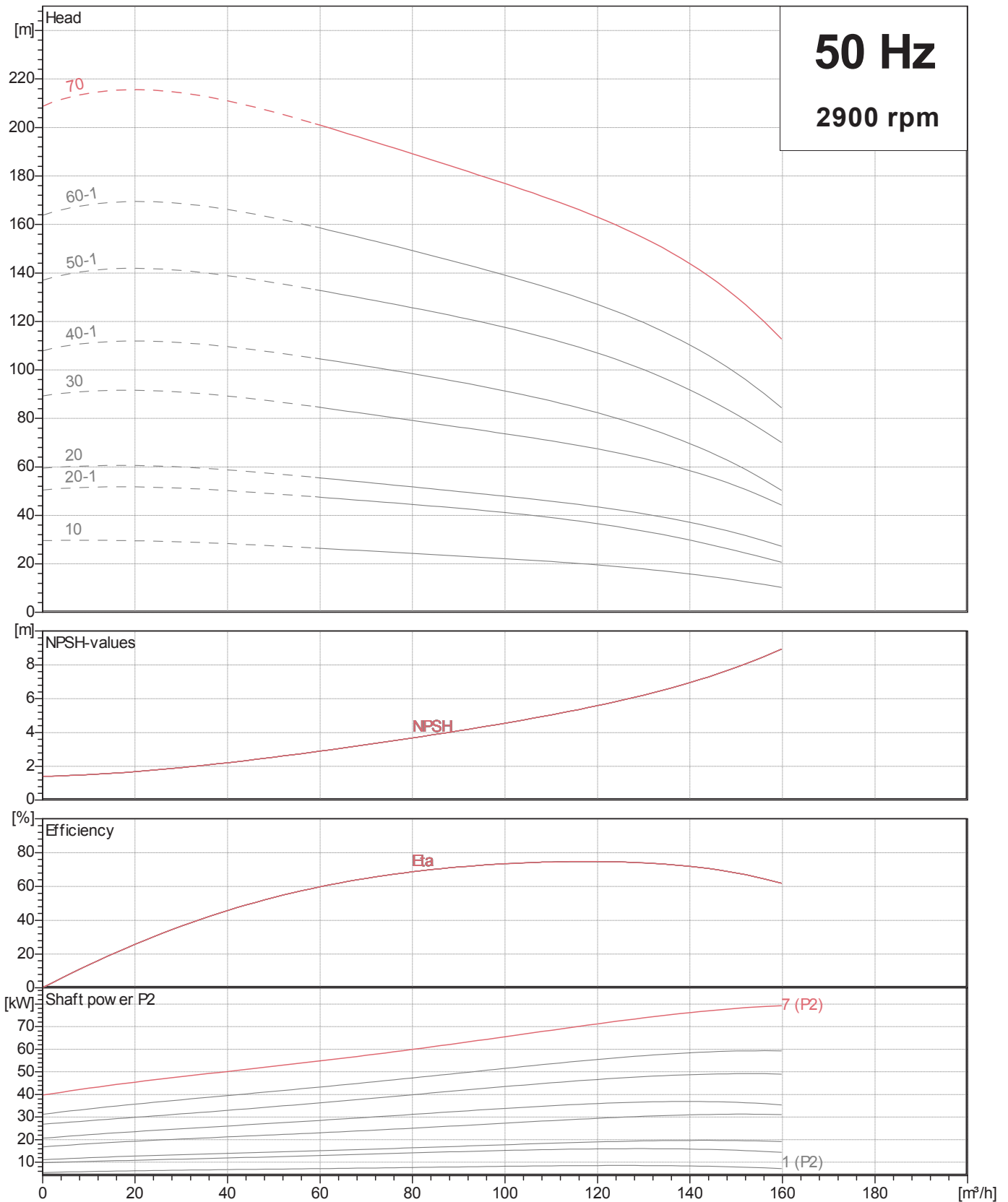


Pump type	Motor	Dimension [mm]					Bare Pump Weight [kg]	Pumpset Weight [kg]
	P2	DIN flange		D1	D2	D3	DIN flange	DIN flange
	[kW]	H1	H2					
EMV 90-10-1	5.5	572	934	235	197	300	70.1	122.2
EMV 90-10	7.5	572	970	235	197	300	70.1	128.5
EMV 90-20-2	11.0	774	1279	318	245	350	85.8	174.4
EMV 90-20	15.0	774	1284	318	245	350	85.9	184.5
EMV 90-30-2	18.5	866	1416	318	245	350	90.9	214.7
EMV 90-30	22.0	866	1446	358	265	350	90.7	257.5
EMV 90-40-2	30.0	958	1618	420	295	400	107.1	327.3
EMV 90-40	30.0	958	1618	420	295	400	107.1	327.3
EMV 90-50-2	37.0	1050	1710	420	295	400	113.5	346.9
EMV 90-50	37.0	1050	1710	420	295	400	113.5	346.9
EMV 90-60-2	45.0	1142	1832	470	325	450	121.6	410.2
EMV 90-60	45.0	1142	1832	470	325	450	121.6	410.3

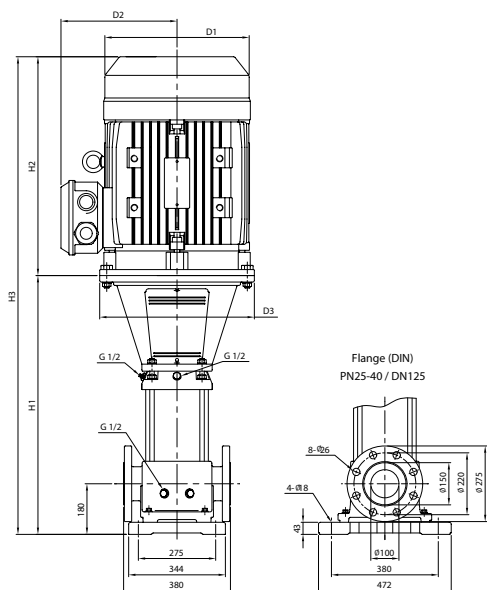
EMVS/K 90



Pump type	Motor	Dimension [mm]					Bare Pump Weight [kg]	Pumpset Weight [kg]
	P2	DIN flange		D1	D2	D3	DIN flange	DIN flange
	[kW]	H1	H2					
EMVS/K 90-10-1	5.5	576	938	235	197	300	60.3	112.1
EMVS/K 90-10	7.5	576	974	235	197	300	60.3	118.4
EMVS/K 90-20-2	11.0	778	1283	318	245	350	75.9	164.2
EMVS/K 90-20	15.0	778	1288	318	245	350	76.0	174.3
EMVS/K 90-30-2	18.5	870	1420	318	245	350	81.0	204.4
EMVS/K 90-30	22.0	870	1450	358	265	350	80.8	247.2
EMVS/K 90-40-2	30.0	962	1622	420	295	400	97.0	316.9
EMVS/K 90-40	30.0	962	1622	420	295	400	97.0	316.9
EMVS/K 90-50-2	37.0	1054	1714	420	295	400	103.8	336.9
EMVS/K 90-50	37.0	1054	1714	420	295	400	103.9	337.0
EMVS/K 90-60-2	45.0	1146	1836	470	325	450	111.7	400.0
EMVS/K 90-60	45.0	1146	1836	470	325	450	111.7	400.1

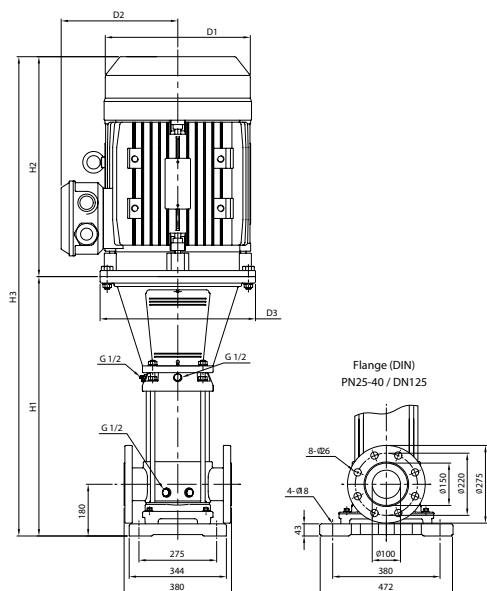


EMV 120

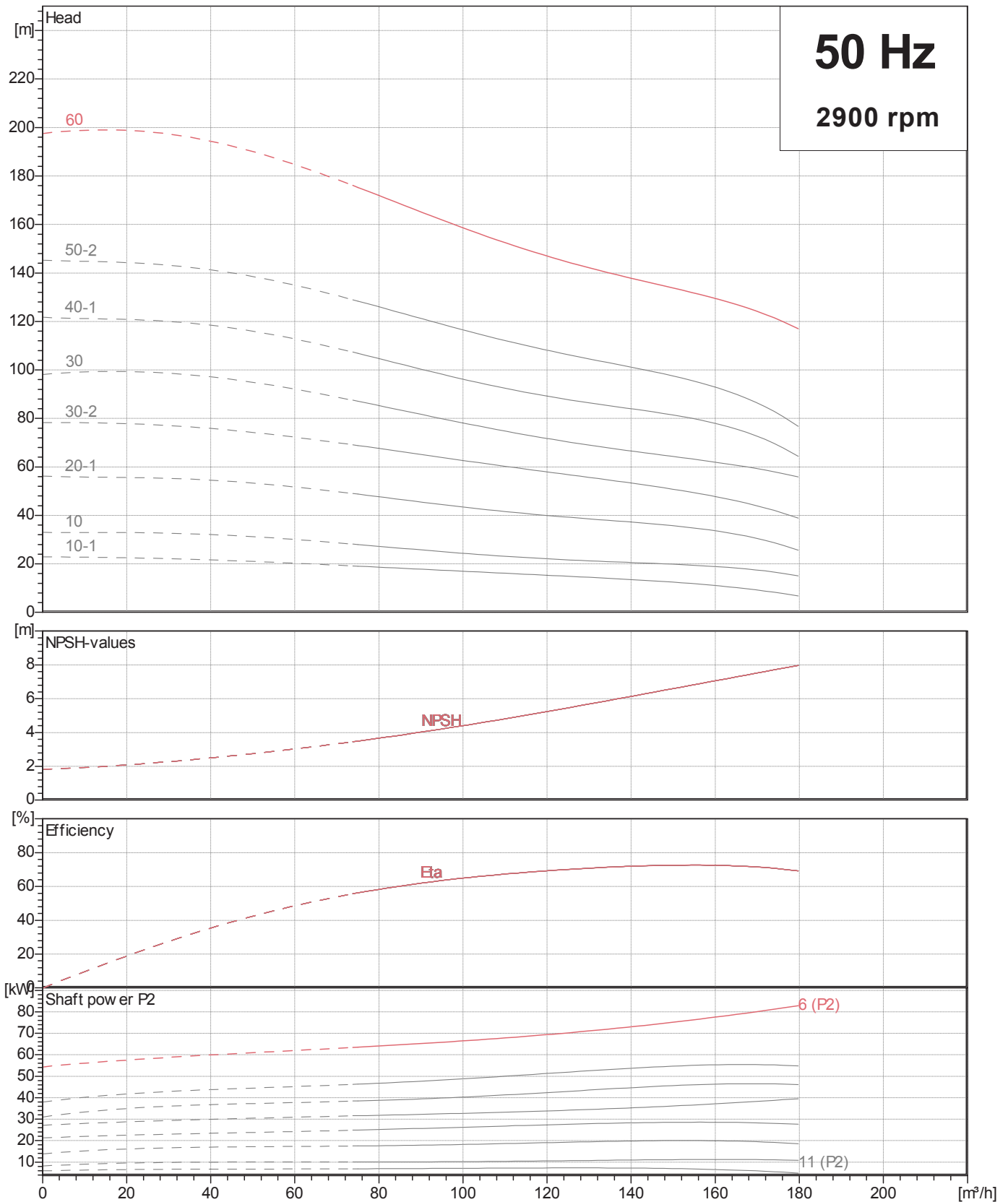


Pump type	Motor	Dimension [mm]						Bare Pump Weight [kg]	Pumpset Weight [kg]
	P2 [kW]	DIN flange			D1	D2	D3	DIN flange	DIN flange
		H1	H2	H3					
EMV 120-10	11.0	834	505	1339	318	245	350	110.76	196.76
EMV 120-20-1	18.5	989.5	550	1539.5	318	245	350	120.52	241.52
EMV 120-20	22.0	989.5	580	1569.5	358	265	350	124.08	288.08
EMV 120-30	30.0	1145	660	1805	420	295	400	141.26	358.26
EMV 120-40-1	37.0	1300.5	660	1960.5	420	295	400	150.94	367.94
EMV 120-50-1	45.0	1460	690	2150	470	325	450	163.72	448.72
EMV 120-60-1	55.0	1641.5	770	2411.5	510	355	550	205.61	572.61
EMV 120-70	75.0	1797	845	2642	580	410	550	214.96	744.96

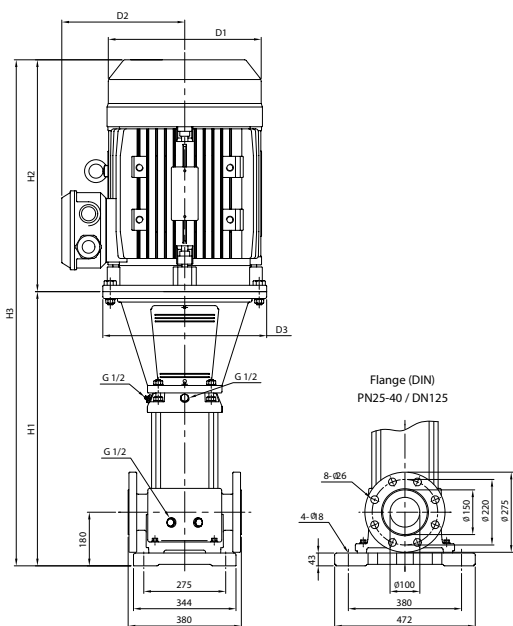
EMVS/K 120



Pump type	Mo- tor	Dimension [mm]						Bare Pump Weight [kg]	Pumpset Weight [kg]
	P2 [kW]	DIN flange			D1	D2	D3	DIN flange	DIN flange
		H1	H2	H3					
EMVS/K 120-10	11.0	837	505	1342	318	245	350	95.42	181.42
EMVS/K 120-20-1	18.5	992.5	550	1542.5	318	245	350	105.32	226.32
EMVS/K 120-20	22.0	992.5	580	1572.5	358	265	350	108.88	272.88
EMVS/K 120-30	30.0	1149	660	1809	420	295	400	126.14	343.14
EMVS/K 120-40-1	37.0	1303.5	660	1963.5	420	295	400	136.02	353.02
EMVS/K 120-50-1	45.0	1463	690	2153	470	325	450	148.82	433.82
EMVS/K 120-60-1	55.0	1644.5	770	2414.5	510	355	550	191.06	558.06
EMVS/K 120-70	75.0	1800	845	2645	580	410	550	200.49	730.49

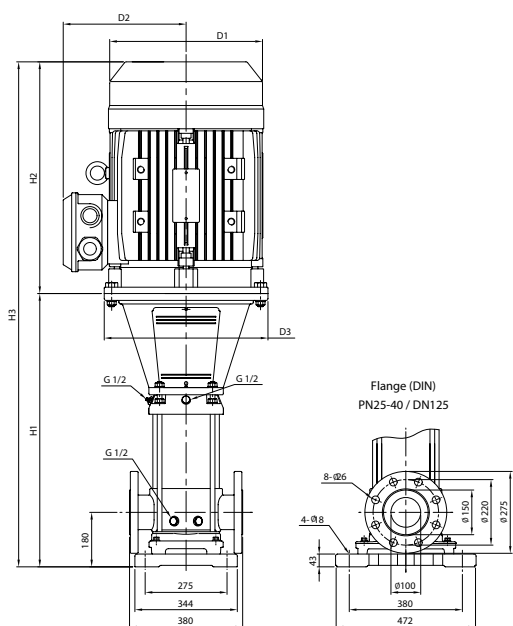


EMV 150



Pump type	Motor	Dimension [mm]						Bare Pump Weight [kg]	Pumpset Weight [kg]
	P2 [kW]	DIN flange			D1	D2	D3	DIN flange	DIN flange
		H1	H2	H3					
EMV 150-10-1	11.0	834	505	1339	318	245	350	110.67	1966.70
EMV 150-10	15.0	834	510	1344	318	245	350	110.72	206.82
EMV 150-20-1	22.0	989.5	580	1569.5	358	265	350	120.21	284.21
EMV 150-30-2	30.0	1145	660	1805	420	295	400	141.02	358.02
EMV 150-30	37.0	1145	660	1805	420	295	400	141.12	371.12
EMV 150-40-1	45.0	1304.5	690	1994.5	470	325	450	153.82	438.82
EMV 150-50-2	55.0	1486	770	2256	510	355	550	195.86	562.86
EMV 150-60	75.0	1641.5	845	2486.5	580	410	550	204.86	734.86

EMVS/K 150



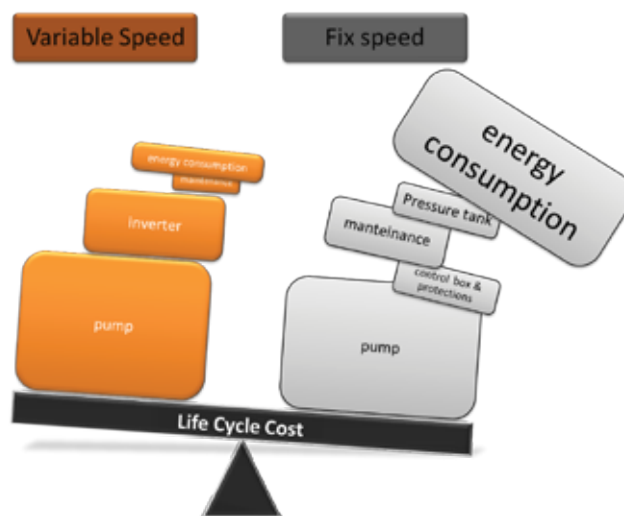
Pump type	Mo- tor	Dimension [mm]						Bare Pump Weight [kg]	Pumpset Weight [kg]
	P2 [kW]	DIN flange			D1	D2	D3	DIN flange	DIN flange
		H1	H2	H3					
EMVS/K 150-10-1	11.0	837	505	1342	318	245	350	84.82	170.82
EMVS/K 150-10	15.0	837	510	1347	318	245	350	84.82	180.92
EMVS/K 150-20-1	22.0	992.5	580	1572.5	358	256	350	104.43	268.43
EMVS/K 150-30-2	30.0	1148	660	1808	420	295	400	125.42	342.42
EMVS/K 150-30	37.0	1148	660	1808	420	295	400	125.42	355.42
EMVS/K 150-40-1	45.0	1307.5	690	1997.5	470	325	450	138.22	423.22
EMVS/K 150-50-2	55.0	1489	770	2259	510	355	550	180.36	547.76
EMVS/K 150-60	75.0	1644.5	845	2489.5	580	410	550	189.76	719.76



VASCO is a purpose-built family of variable frequency drives, designed to control and protect pum-ping systems based on changing pump speed.

From water supply for domestic, irrigation, commercial and industrial applications, to heating and air conditioning, from filtering to pressure-washing, the VASCO range perfectly fits any new or existing application ensuring:

- **energy and cost saving**
- **simplified installation**
- **longevity of pumping system**
- **greater reliability**



1 VASCO + 1 or 2 DOL



A first way of splitting consists of installing one pump driven by the VASCO and 1 or 2 DOL pumps directly connected to the main power (Direct on Line) ; VASCO switches on/off the 1 or 2 DOL pumps through contactors.

VASCO alternates the two DOL pumps (same working time) to average out pump wear.

From 1 to 8 VASCO in COMBO connection



A second way of splitting (named COMBO) consists of using several pumps in parallel (up to 8) each one driven by a VASCO unit.

In this way, efficiency and the reliability of the pump group is maximized; Vasco controls and protects each connected pump.

Each VASCO controls and protects it's pump and the operation is shared among all the connected pumps to average out pump wear; in case of failure, the remaining pumps will maintain the pumping operation.

From 1 to 8 VASCO in COMBO connection + 1 or 2 DOL



Additionally, it is possible to equip the system with pumps connected in COMBO mode plu 1 or 2 DOL pumps to satisfy additional water demand .

Project Applications

Fire Sprinkler/Hydrant Pump



Booster Set Pump



Water Transfer Pump



Your local distributor details:



Euroflo Pumps International Pte Ltd

No.1 Joo Koon Way Singapore 628942 Tel: +65 6861 3836 Fax: +65 6861 3936

EMV / May 13 / 1K